

Datasheet for ABIN7303214

anti-CMTM4 antibody**2** Images[Go to Product page](#)

Overview

Quantity:	100 µL
Target:	CMTM4
Reactivity:	Human, Mouse, Cow
Host:	Rabbit
Clonality:	Polyclonal
Conjugate:	This CMTM4 antibody is un-conjugated
Application:	Western Blotting (WB), Immunohistochemistry (IHC)

Product Details

Immunogen:	KLH-conjugated synthetic peptide encompassing a sequence within the center region of human CMTM4.
Specificity:	Recognizes endogenous levels of CMTM4 protein.
Characteristics:	Rabbit polyclonal antibody to CMTM4
Purification:	The antibody was purified by affinity chromatography.

Target Details

Target:	CMTM4
Alternative Name:	CMTM4 (CMTM4 Products)
Background:	CKLFSF4, CKLF-like MARVEL transmembrane domain-containing protein 4, Chemokine-like factor superfamily member 4

Target Details

Gene ID: 146223, 97487

UniProt: [Q8IZR5](#), [Q8CJ61](#)

Application Details

Application Notes: WB (1:500 - 1:1000), IH (1:100 - 1:200)

Restrictions: For Research Use only

Handling

Format: Liquid

Buffer: Liquid in PBS, pH 7.3, 0.2 % BSA, and 0.02 % sodium azide.

Preservative: Sodium azide

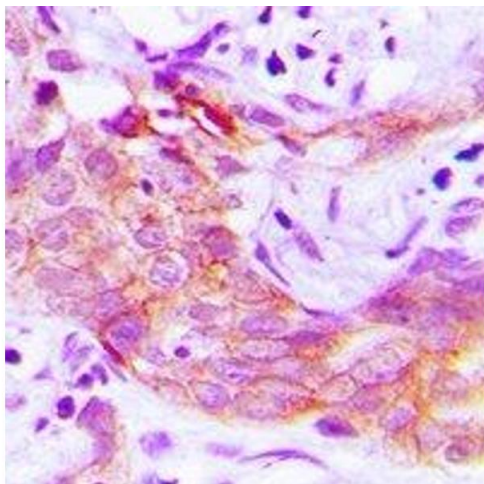
Precaution of Use: This product contains Sodium azide: a POISONOUS AND HAZARDOUS SUBSTANCE which should be handled by trained staff only.

Storage: -20 °C

Storage Comment: Shipped at 4°C. Upon delivery aliquot and store at -20°C for one year. Avoid freeze/thaw cycles.

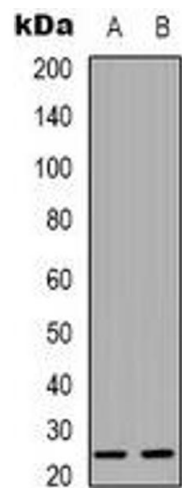
Expiry Date: 12 months

Images



Immunohistochemistry

Image 1. Immunohistochemical analysis of CMTM4 staining in human prostate cancer formalin fixed paraffin embedded tissue section. The section was pre-treated using heat mediated antigen retrieval with sodium citrate buffer (pH 6.0). The section was then incubated



Western Blotting

Image 2. Western blot analysis of CMTM4 expression in HeLa (A), A431 (B) whole cell lysates.