

Datasheet for ABIN7303218
anti-CPNE8 antibody (N-Term)

2 Images

[Go to Product page](#)

Overview

| | |
|----------------------|---|
| Quantity: | 100 µL |
| Target: | CPNE8 |
| Binding Specificity: | N-Term |
| Reactivity: | Human, Mouse, Rat, Cow, Zebrafish (Danio rerio) |
| Host: | Rabbit |
| Clonality: | Polyclonal |
| Conjugate: | This CPNE8 antibody is un-conjugated |
| Application: | Immunohistochemistry (IHC), Western Blotting (WB) |

Product Details

| | |
|------------------|--|
| Immunogen: | KLH-conjugated synthetic peptide encompassing a sequence within the N-term region of human Copine 8. |
| Specificity: | Recognizes endogenous levels of Copine 8 protein. |
| Characteristics: | Rabbit polyclonal antibody to Copine 8 |
| Purification: | The antibody was purified by affinity chromatography. |

Target Details

| | |
|-------------------|---|
| Target: | CPNE8 |
| Alternative Name: | Copine 8 (CPNE8 Products) |
| Background: | Copine-8, Copine VIII |

Target Details

| | |
|----------|---|
| Gene ID: | 144402, 66871 |
| UniProt: | Q86YQ8 , Q9DC53 |

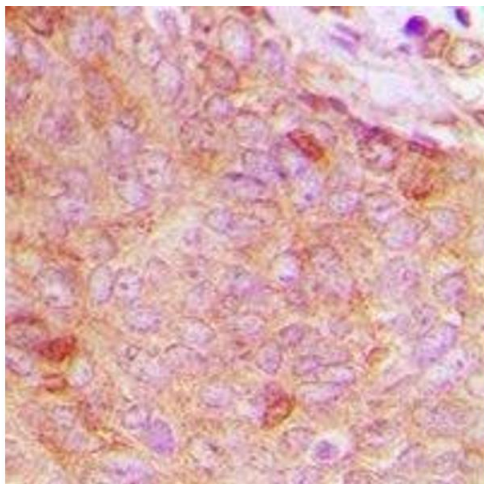
Application Details

| | |
|--------------------|---|
| Application Notes: | WB (1:500 - 1:1000), IH (1:100 - 1:200) |
| Restrictions: | For Research Use only |

Handling

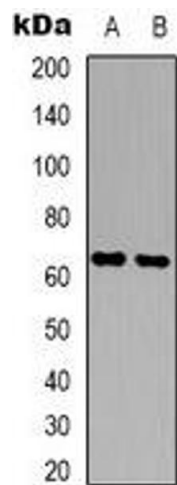
| | |
|--------------------|--|
| Format: | Liquid |
| Buffer: | Liquid in PBS, pH 7.3, 0.2 % BSA, and 0.02 % sodium azide. |
| Preservative: | Sodium azide |
| Precaution of Use: | This product contains Sodium azide: a POISONOUS AND HAZARDOUS SUBSTANCE which should be handled by trained staff only. |
| Storage: | -20 °C |
| Storage Comment: | Shipped at 4°C. Upon delivery aliquot and store at -20°C for one year. Avoid freeze/thaw cycles. |
| Expiry Date: | 12 months |

Images



Immunohistochemistry

Image 1. Immunohistochemical analysis of Copine 8 staining in human breast cancer formalin fixed paraffin embedded tissue section. The section was pre-treated using heat mediated antigen retrieval with sodium citrate buffer (pH 6.0). The section was then incubated



Western Blotting

Image 2. Western blot analysis of Copine 8 expression in A431 (A), NIH3T3 (B) whole cell lysates.