

Datasheet for ABIN7303224

anti-POLR3E antibody**3** Images[Go to Product page](#)

Overview

Quantity:	100 µL
Target:	POLR3E
Reactivity:	Human, Monkey
Host:	Rabbit
Clonality:	Polyclonal
Application:	Immunohistochemistry (IHC), Western Blotting (WB), Immunofluorescence (IF), Immunochromatography (IC)

Product Details

Immunogen:	KLH-conjugated synthetic peptide encompassing a sequence within the center region of human POLR3E.
Specificity:	Recognizes endogenous levels of POLR3E protein.
Characteristics:	Rabbit polyclonal antibody to POLR3E
Purification:	The antibody was purified by affinity chromatography.

Target Details

Target:	POLR3E
Alternative Name:	POLR3E (POLR3E Products)
Background:	KIAA1452, DNA-directed RNA polymerase III subunit RPC5, RNA polymerase III subunit C5, DNA-directed RNA polymerase III 80 kDa polypeptide
Gene ID:	101060521, 55718

Target Details

UniProt: Q9NVU0

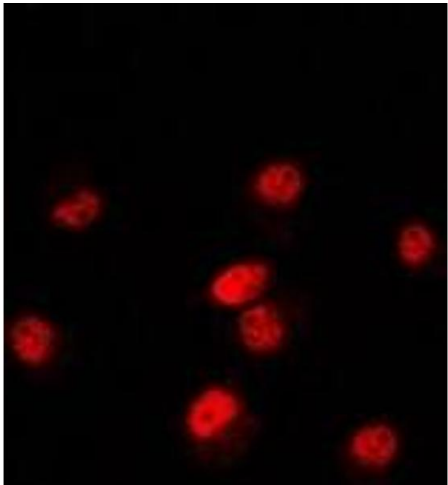
Application Details

Application Notes:	WB (1:500 - 1:1000), IH (1:100 - 1:200), IF/IC (1:100 - 1:500)
Restrictions:	For Research Use only

Handling

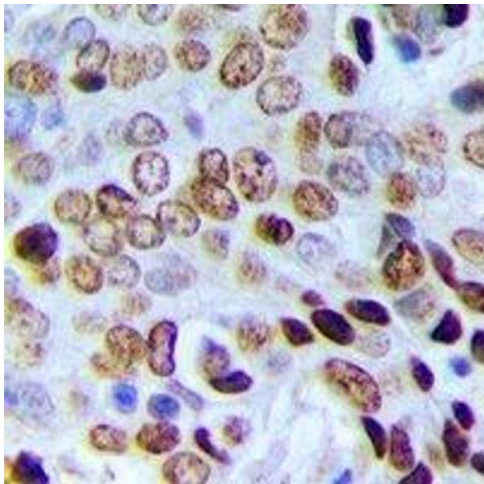
Format:	Liquid
Buffer:	Liquid in PBS, pH 7.3, 0.2 % BSA, and 0.02 % sodium azide.
Preservative:	Sodium azide
Precaution of Use:	This product contains Sodium azide: a POISONOUS AND HAZARDOUS SUBSTANCE which should be handled by trained staff only.
Storage:	-20 °C
Storage Comment:	Shipped at 4°C. Upon delivery aliquot and store at -20°C for one year. Avoid freeze/thaw cycles.
Expiry Date:	12 months

Images



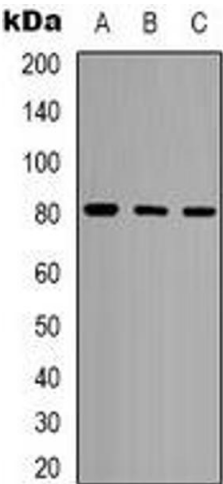
Immunofluorescence

Image 1. Immunofluorescent analysis of POLR3E staining in Hela cells. Formalin-fixed cells were permeabilized with 0.1% Triton X-100 in TBS for 5-10 minutes and blocked with 3% BSA-PBS for 30 minutes at room temperature. Cells were probed with the primary antibody



Immunohistochemistry

Image 2. Immunohistochemical analysis of POLR3E staining in human prostate cancer formalin fixed paraffin embedded tissue section. The section was pre-treated using heat mediated antigen retrieval with sodium citrate buffer (pH 6.0). The section was then incubated



Western Blotting

Image 3. Western blot analysis of POLR3E expression in HeLa (A), Jurkat (B), Ramos (C) whole cell lysates.