

Datasheet for ABIN7303230
anti-GABRD antibody



[Go to Product page](#)

2 Images

Overview

Quantity:	100 µL
Target:	GABRD
Reactivity:	Human, Rat, Mouse
Host:	Rabbit
Clonality:	Polyclonal
Application:	Western Blotting (WB), Immunohistochemistry (IHC)

Product Details

Immunogen:	KLH-conjugated synthetic peptide encompassing a sequence within the center region of human GABRD.
Specificity:	Recognizes endogenous levels of GABRD protein.
Characteristics:	Rabbit polyclonal antibody to GABRD
Purification:	The antibody was purified by affinity chromatography.

Target Details

Target:	GABRD
Alternative Name:	GABRD (GABRD Products)
Background:	Gamma-aminobutyric acid receptor subunit delta, GABA(A) receptor subunit delta
Gene ID:	2563, 14403, 29689
UniProt:	O14764 , P22933 , P18506

Application Details

Application Notes: WB (1:500 - 1:1000), IH (1:100 - 1:200)

Restrictions: For Research Use only

Handling

Format: Liquid

Buffer: Liquid in PBS, pH 7.3, 0.2 % BSA, and 0.02 % sodium azide.

Preservative: Sodium azide

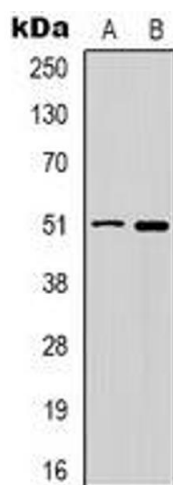
Precaution of Use: This product contains Sodium azide: a POISONOUS AND HAZARDOUS SUBSTANCE which should be handled by trained staff only.

Storage: -20 °C

Storage Comment: Shipped at 4°C. Upon delivery aliquot and store at -20°C for one year. Avoid freeze/thaw cycles.

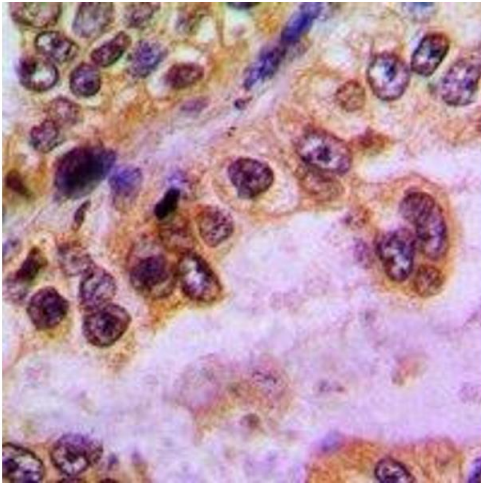
Expiry Date: 12 months

Images



Western Blotting

Image 1. Western blot analysis of GABRD expression in HT29 (A), PC12 (B) whole cell lysates.



Immunohistochemistry

Image 2. Immunohistochemical analysis of GABRD staining in human lung cancer formalin fixed paraffin embedded tissue section. The section was pre-treated using heat mediated antigen retrieval with sodium citrate buffer (pH 6.0). The section was then incubated with