



[Go to Product page](#)

Datasheet for ABIN7303256  
**anti-PLA1A antibody (C-Term)**

1 Image

### Overview

Quantity:	100 µL
Target:	PLA1A
Binding Specificity:	C-Term
Reactivity:	Human, Mouse
Host:	Rabbit
Clonality:	Polyclonal
Application:	Western Blotting (WB)

### Product Details

Immunogen:	KLH-conjugated synthetic peptide encompassing a sequence within the C-term region of human PLA1A.
Specificity:	Recognizes endogenous levels of PLA1A protein.
Characteristics:	Rabbit polyclonal antibody to PLA1A
Purification:	The antibody was purified by affinity chromatography.

### Target Details

Target:	PLA1A
Alternative Name:	PLA1A ( <a href="#">PLA1A Products</a> )
Background:	NMD, PSPLA1, Phospholipase A1 member A, Phosphatidylserine-specific phospholipase A1, PS-PLA1

## Target Details

Gene ID: 51365, 85031

UniProt: [Q53H76](#), [Q8VI78](#)

## Application Details

Application Notes: WB (1:500 - 1:1000)

Restrictions: For Research Use only

## Handling

Format: Liquid

Buffer: Liquid in PBS, pH 7.3, 0.2 % BSA, and 0.02 % sodium azide.

Preservative: Sodium azide

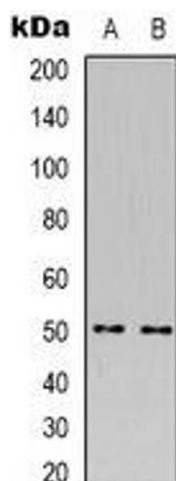
Precaution of Use: This product contains Sodium azide: a POISONOUS AND HAZARDOUS SUBSTANCE which should be handled by trained staff only.

Storage: -20 °C

Storage Comment: Shipped at 4°C. Upon delivery aliquot and store at -20°C for one year. Avoid freeze/thaw cycles.

Expiry Date: 12 months

## Images



### Western Blotting

**Image 1.** Western blot analysis of PLA1A expression in HEK293T (A), NIH3T3 (B) whole cell lysates.