

Datasheet for ABIN7303380

anti-GIPR antibody**3** Images[Go to Product page](#)

Overview

Quantity:	100 µL
Target:	GIPR
Reactivity:	Human
Host:	Rabbit
Clonality:	Polyclonal
Application:	Western Blotting (WB), Immunohistochemistry (IHC), Immunofluorescence (IF), Immunochromatography (IC)

Product Details

Immunogen:	KLH-conjugated synthetic peptide encompassing a sequence within the center region of human GIP Receptor.
Specificity:	Recognizes endogenous levels of GIP Receptor protein.
Characteristics:	Rabbit polyclonal antibody to GIP Receptor
Purification:	The antibody was purified by affinity chromatography.

Target Details

Target:	GIPR
Alternative Name:	GIP Receptor (GIPR Products)
Background:	Gastric inhibitory polypeptide receptor, GIP-R, Glucose-dependent insulintropic polypeptide receptor
Gene ID:	2696

Target Details

UniProt:	P48546
Pathways:	Positive Regulation of Peptide Hormone Secretion , cAMP Metabolic Process , Regulation of G-Protein Coupled Receptor Protein Signaling

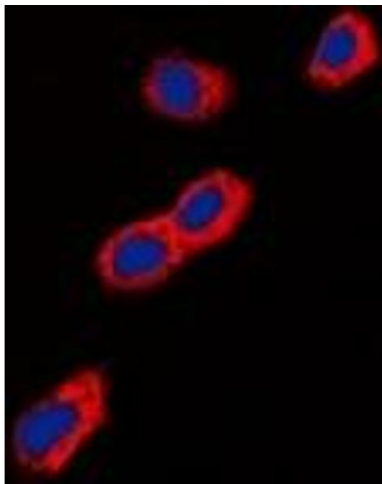
Application Details

Application Notes:	WB (1:500 - 1:1000), IH (1:100 - 1:200), IF/IC (1:100 - 1:500)
Restrictions:	For Research Use only

Handling

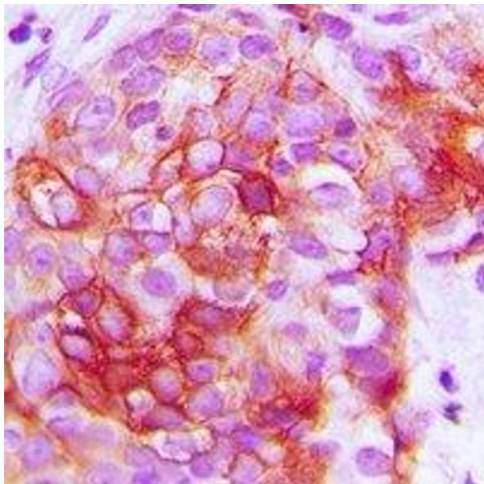
Format:	Liquid
Buffer:	Liquid in PBS, pH 7.3, 0.2 % BSA, and 0.02 % sodium azide.
Preservative:	Sodium azide
Precaution of Use:	This product contains Sodium azide: a POISONOUS AND HAZARDOUS SUBSTANCE which should be handled by trained staff only.
Storage:	-20 °C
Storage Comment:	Shipped at 4°C. Upon delivery aliquot and store at -20°C for one year. Avoid freeze/thaw cycles.
Expiry Date:	12 months

Images



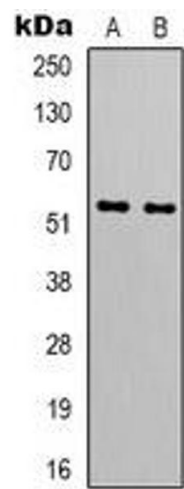
Immunofluorescence

Image 1. Immunofluorescent analysis of GIP Receptor staining in A549 cells. Formalin-fixed cells were permeabilized with 0.1% Triton X-100 in TBS for 5-10 minutes and blocked with 3% BSA-PBS for 30 minutes at room temperature. Cells were probed with the primary an



Immunohistochemistry

Image 2. Immunohistochemical analysis of GIP Receptor staining in human breast cancer formalin fixed paraffin embedded tissue section. The section was pre-treated using heat mediated antigen retrieval with sodium citrate buffer (pH 6.0). The section was then incub



Western Blotting

Image 3. Western blot analysis of GIP Receptor expression in HT1080 (A), A549 (B) whole cell lysates.