

Datasheet for ABIN7303396
anti-FOXO1 antibody (pSer256)



[Go to Product page](#)

3 Images

Overview

Quantity:	100 µL
Target:	FOXO1
Binding Specificity:	pSer256
Reactivity:	Human, Mouse, Rat, Cow, Pig, Zebrafish (Danio rerio)
Host:	Rabbit
Clonality:	Polyclonal
Conjugate:	This FOXO1 antibody is un-conjugated
Application:	Western Blotting (WB), Immunohistochemistry (IHC), Immunofluorescence (IF), Immunoprecipitation (IP), Immunochromatography (IC)

Product Details

Immunogen:	KLH-conjugated synthetic peptide encompassing a sequence within the center region of human FOXO1 (pS256).
Specificity:	Recognizes endogenous levels of FOXO1 (pS256) protein.
Characteristics:	Rabbit polyclonal antibody to FOXO1 (pS256)
Purification:	The antibody was purified by immunogen affinity chromatography.

Target Details

Target:	FOXO1
Alternative Name:	FOXO1 (FOXO1 Products)

Target Details

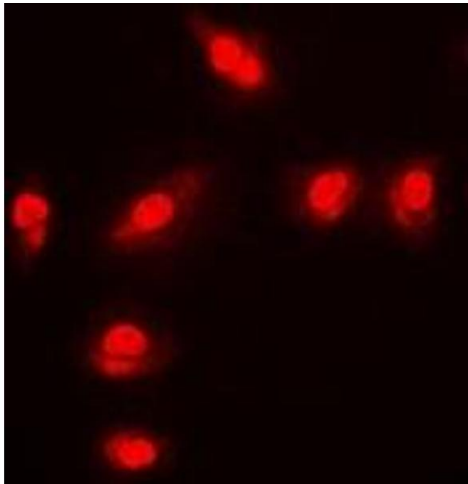
Background:	FKHR, FOXO1A, Forkhead box protein O1, Forkhead box protein O1A, Forkhead in rhabdomyosarcoma
Gene ID:	2308, 56458, 84482
UniProt:	Q12778 , Q9R1E0 , G3V7R4
Pathways:	PI3K-Akt Signaling , Cell Division Cycle , Fc-epsilon Receptor Signaling Pathway , EGFR Signaling Pathway , Neurotrophin Signaling Pathway , Carbohydrate Homeostasis , Chromatin Binding , Regulation of Carbohydrate Metabolic Process , CXCR4-mediated Signaling Events , BCR Signaling

Application Details

Application Notes:	WB (1:500 - 1:1000), IH (1:100 - 1:200), IF/IC (1:100 - 1:500), IP (1:10 - 1:100)
Restrictions:	For Research Use only

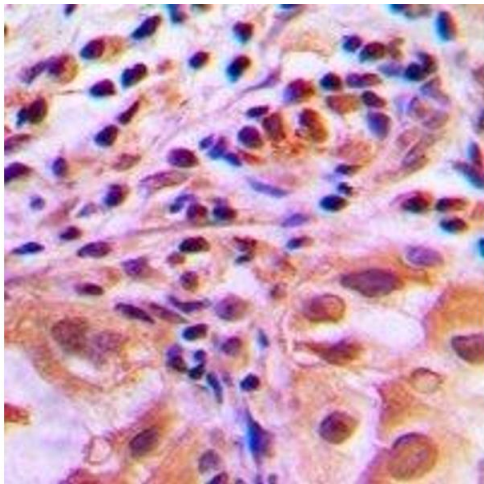
Handling

Format:	Liquid
Buffer:	Liquid in 0.42 % Potassium phosphate, 0.87 % Sodium chloride, pH 7.3, 30 % glycerol, and 0.01 % sodium azide.
Preservative:	Sodium azide
Precaution of Use:	This product contains Sodium azide: a POISONOUS AND HAZARDOUS SUBSTANCE which should be handled by trained staff only.
Storage:	-20 °C
Storage Comment:	Shipped at 4°C. Upon delivery aliquot and store at -20°C for one year. Avoid freeze/thaw cycles.
Expiry Date:	12 months



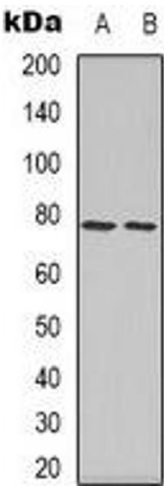
Immunofluorescence

Image 1. Immunofluorescent analysis of FOXO1 (pS256) staining in MCF7 cells. Formalin-fixed cells were permeabilized with 0.1% Triton X-100 in TBS for 5-10 minutes and blocked with 3% BSA-PBS for 30 minutes at room temperature. Cells were probed with the primary a



Immunohistochemistry

Image 2. Immunohistochemical analysis of FOXO1 (pS256) staining in human lung cancer formalin fixed paraffin embedded tissue section. The section was pre-treated using heat mediated antigen retrieval with sodium citrate buffer (pH 6.0). The section was then incuba



Western Blotting

Image 3. Western blot analysis of FOXO1 (pS256) expression in Hela (A), SHSY5Y (B) whole cell lysates.