

Datasheet for ABIN7303410

**anti-AGTR1a antibody****3** Images[Go to Product page](#)

## Overview

Quantity:	100 µL
Target:	AGTR1a
Reactivity:	Human, Mouse, Rat, Sheep, Cow, Pig
Host:	Rabbit
Clonality:	Polyclonal
Conjugate:	This AGTR1a antibody is un-conjugated
Application:	Western Blotting (WB), Immunofluorescence (IF), Immunohistochemistry (IHC), Immunochromatography (IC)

## Product Details

Immunogen:	KLH-conjugated synthetic peptide encompassing a sequence within the center region of human AT1.
Specificity:	Recognizes endogenous levels of AT1 protein.
Characteristics:	Rabbit polyclonal antibody to AT1
Purification:	The antibody was purified by affinity chromatography.

## Target Details

Target:	AGTR1a
Alternative Name:	AT1 ( <a href="#">AGTR1a Products</a> )
Background:	AGTR1A, AGTR1B, AT2R1, AT2R1B, Type-1 angiotensin II receptor, AT1AR, AT1BR, Angiotensin II type-1 receptor, AT1

## Target Details

Gene ID:	185
UniProt:	<a href="#">P30556</a>
Pathways:	<a href="#">ACE Inhibitor Pathway</a> , <a href="#">Regulation of Systemic Arterial Blood Pressure by Hormones</a> , <a href="#">Feeding Behaviour</a>

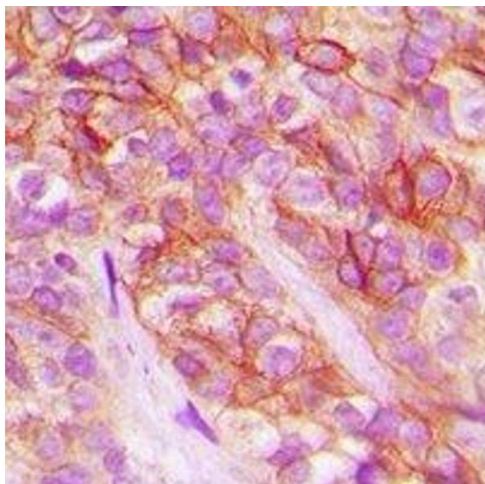
## Application Details

Application Notes:	WB (1:500 - 1:2000), IH (1:50 - 1:200), IF/IC (1:50 - 1:100)
Restrictions:	For Research Use only

## Handling

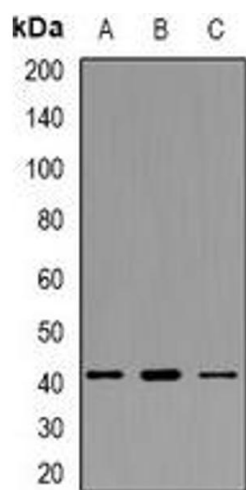
Format:	Liquid
Buffer:	Liquid in 0.42 % Potassium phosphate, 0.87 % Sodium chloride, pH 7.3, 30 % glycerol, and 0.01 % sodium azide.
Preservative:	Sodium azide
Precaution of Use:	This product contains Sodium azide: a POISONOUS AND HAZARDOUS SUBSTANCE which should be handled by trained staff only.
Storage:	-20 °C
Storage Comment:	Shipped at 4°C. Upon delivery aliquot and store at -20°C for one year. Avoid freeze/thaw cycles.
Expiry Date:	12 months

## Images



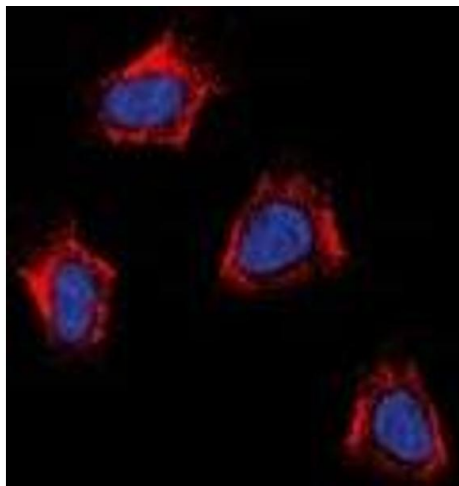
### Immunohistochemistry

**Image 1.** Immunohistochemical analysis of AT1 staining in human breast cancer formalin fixed paraffin embedded tissue section. The section was pre-treated using heat mediated antigen retrieval with sodium citrate buffer (pH 6.0). The section was then incubated with



### Western Blotting

**Image 2.** Western blot analysis of AT1 expression in HepG2 (A), K562 (B), RAW264.7 (C) whole cell lysates.



### Immunofluorescence

**Image 3.** Immunofluorescent analysis of AT1 staining in K562 cells. Formalin-fixed cells were permeabilized with 0.1% Triton X-100 in TBS for 5-10 minutes and blocked with 3% BSA-PBS for 30 minutes at room temperature. Cells were probed with the primary antibody in