

Datasheet for ABIN7303414
anti-PPP1R12A antibody (pSer696)[Go to Product page](#)

3 Images

Overview

Quantity:	100 µL
Target:	PPP1R12A
Binding Specificity:	pSer696
Reactivity:	Human, Mouse, Rat, Chicken, Zebrafish (Danio rerio), Pig
Host:	Rabbit
Clonality:	Polyclonal
Conjugate:	This PPP1R12A antibody is un-conjugated
Application:	Western Blotting (WB), Immunohistochemistry (IHC), Immunofluorescence (IF), Immunochromatography (IC)

Product Details

Immunogen:	KLH-conjugated synthetic peptide encompassing a sequence within the center region of human MYPT1.
Specificity:	Recognizes endogenous levels of MYPT1 (pT696) protein.
Characteristics:	Rabbit polyclonal antibody to MYPT1 (pT696)
Purification:	The antibody was purified by affinity chromatography.

Target Details

Target:	PPP1R12A
Alternative Name:	MYPT1 (PPP1R12A Products)

Target Details

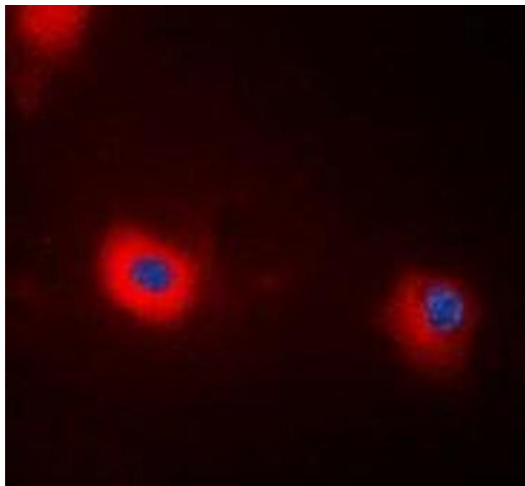
Background:	MBS, MYPT1, Protein phosphatase 1 regulatory subunit 12A, Myosin phosphatase-targeting subunit 1, Myosin phosphatase target subunit 1, Protein phosphatase myosin-binding subunit
Gene ID:	4659, 17931, 116670
UniProt:	O14974 , Q9DBR7 , Q10728
Pathways:	M Phase

Application Details

Application Notes:	WB (1:500 - 1:2000), IH (1:50 - 1:200), IF/IC (1:50 - 1:100)
Restrictions:	For Research Use only

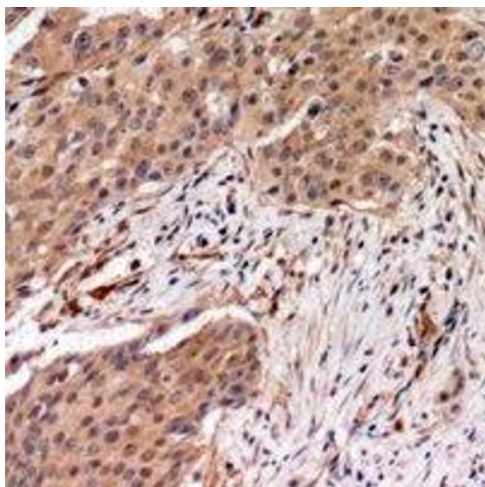
Handling

Format:	Liquid
Buffer:	Liquid in 0.42 % Potassium phosphate, 0.87 % Sodium chloride, pH 7.3, 30 % glycerol, and 0.01 % sodium azide.
Preservative:	Sodium azide
Precaution of Use:	This product contains Sodium azide: a POISONOUS AND HAZARDOUS SUBSTANCE which should be handled by trained staff only.
Storage:	-20 °C
Storage Comment:	Shipped at 4°C. Upon delivery aliquot and store at -20°C for one year. Avoid freeze/thaw cycles.
Expiry Date:	12 months



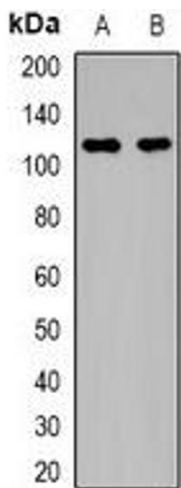
Immunofluorescence

Image 1. Immunofluorescent analysis of MYPT1 (pT696) staining in HEK293T cells. Formalin-fixed cells were permeabilized with 0.1% Triton X-100 in TBS for 5-10 minutes and blocked with 3% BSA-PBS for 30 minutes at room temperature. Cells were probed with the primar



Immunohistochemistry

Image 2. Immunohistochemical analysis of MYPT1 (pT696) staining in human breast cancer formalin fixed paraffin embedded tissue section. The section was pre-treated using heat mediated antigen retrieval with sodium citrate buffer (pH 6.0). The section was then incu



Western Blotting

Image 3. Western blot analysis of MYPT1 (pT696) expression in HEK293T PMA-treated (A), HEK293T UV-treated (B) whole cell lysates.