

Datasheet for ABIN7303418
anti-HSPB6 antibody (N-Term, pSer16)

3 Images

[Go to Product page](#)

Overview

Quantity:	100 µL
Target:	HSPB6
Binding Specificity:	N-Term, pSer16
Reactivity:	Human, Rat, Mouse, Cow, Monkey
Host:	Rabbit
Clonality:	Polyclonal
Conjugate:	This HSPB6 antibody is un-conjugated
Application:	Western Blotting (WB), Immunohistochemistry (IHC), Immunofluorescence (IF), Immunochromatography (IC)

Product Details

Immunogen:	KLH-conjugated synthetic peptide encompassing a sequence within the N-term region of human HSP20.
Specificity:	Recognizes endogenous levels of HSP20 (pS16) protein.
Characteristics:	Rabbit polyclonal antibody to HSP20 (pS16)
Purification:	The antibody was purified by affinity chromatography.

Target Details

Target:	HSPB6
Alternative Name:	HSP20 (HSPB6 Products)

Target Details

Background:	Heat shock protein beta-6, HspB6, Heat shock 20 kDa-like protein p20
Gene ID:	126393, 243912, 192245
UniProt:	O14558 , Q5EBG6 , P97541

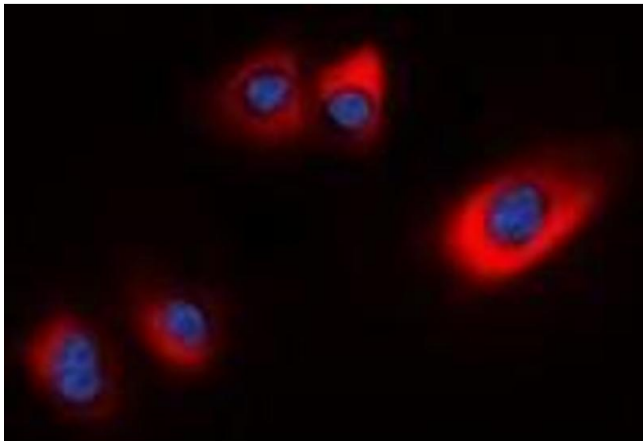
Application Details

Application Notes:	WB (1:500 - 1:2000), IH (1:50 - 1:200), IF/IC (1:50 - 1:100)
Restrictions:	For Research Use only

Handling

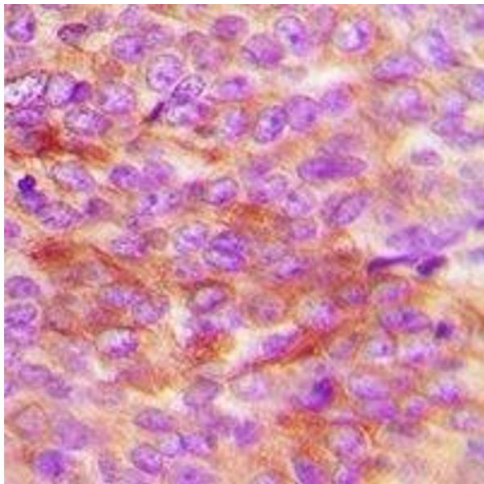
Format:	Liquid
Buffer:	Liquid in 0.42 % Potassium phosphate, 0.87 % Sodium chloride, pH 7.3, 30 % glycerol, and 0.01 % sodium azide.
Preservative:	Sodium azide
Precaution of Use:	This product contains Sodium azide: a POISONOUS AND HAZARDOUS SUBSTANCE which should be handled by trained staff only.
Storage:	-20 °C
Storage Comment:	Shipped at 4°C. Upon delivery aliquot and store at -20°C for one year. Avoid freeze/thaw cycles.
Expiry Date:	12 months

Images



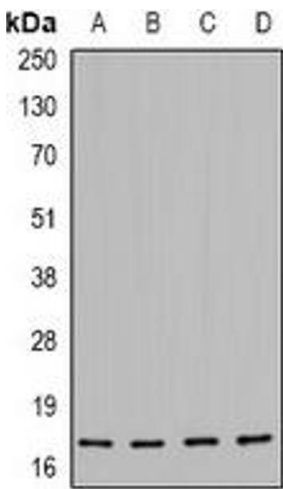
Immunofluorescence

Image 1. Immunofluorescent analysis of HSP20 (pS16) staining in HEK293T cells. Formalin-fixed cells were permeabilized with 0.1% Triton X-100 in TBS for 5-10 minutes and blocked with 3% BSA-PBS for 30 minutes at room temperature. Cells were probed with the primary



Immunohistochemistry

Image 2. Immunohistochemical analysis of HSP20 (pS16) staining in human breast cancer formalin fixed paraffin embedded tissue section. The section was pre-treated using heat mediated antigen retrieval with sodium citrate buffer (pH 6.0). The section was then incub



Western Blotting

Image 3. Western blot analysis of HSP20 (pS16) expression in MCF7 (A), HEK293 (B), NIH3T3 (C), H9C2 (D) whole cell lysates.