



[Go to Product page](#)

Datasheet for ABIN7303424
anti-APC1 antibody (pSer688)

3 Images

Overview

| | |
|----------------------|--|
| Quantity: | 100 µL |
| Target: | APC1 (ANAPC1) |
| Binding Specificity: | pSer688 |
| Reactivity: | Human, Mouse |
| Host: | Rabbit |
| Clonality: | Polyclonal |
| Conjugate: | This APC1 antibody is un-conjugated |
| Application: | Immunohistochemistry (IHC), Western Blotting (WB), Immunofluorescence (IF), Immunochromatography (IC) |

Product Details

| | |
|------------------|--|
| Immunogen: | KLH-conjugated synthetic peptide encompassing a sequence within the center region of human ANAPC1. |
| Specificity: | Recognizes endogenous levels of ANAPC1 (pS688) protein. |
| Characteristics: | Rabbit polyclonal antibody to ANAPC1 (pS688) |
| Purification: | The antibody was purified by affinity chromatography. |

Target Details

| | |
|-------------------|--|
| Target: | APC1 (ANAPC1) |
| Alternative Name: | ANAPC1 (ANAPC1 Products) |

Target Details

| | |
|-------------|---|
| Background: | TSG24, Anaphase-promoting complex subunit 1, APC1, Cyclosome subunit 1, Mitotic checkpoint regulator, Testis-specific gene 24 protein |
| Gene ID: | 64682, 17222 |
| UniProt: | Q9H1A4 , P53995 |

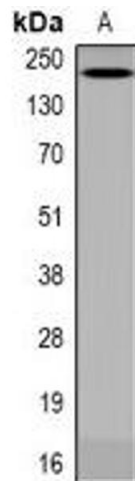
Application Details

| | |
|--------------------|--|
| Application Notes: | WB (1:500 - 1:2000), IH (1:50 - 1:200), IF/IC (1:50 - 1:100) |
| Restrictions: | For Research Use only |

Handling

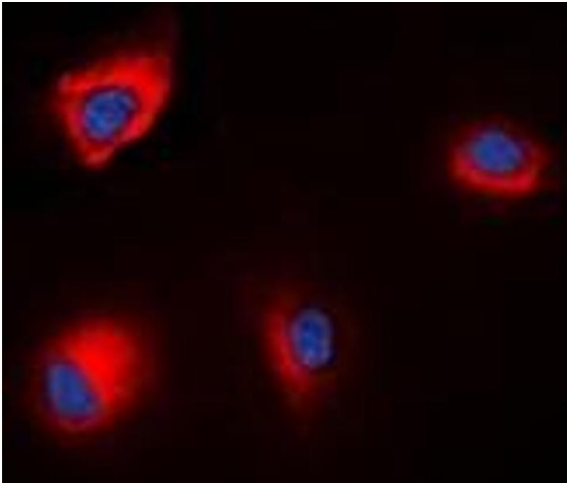
| | |
|--------------------|--|
| Format: | Liquid |
| Buffer: | Liquid in 0.42 % Potassium phosphate, 0.87 % Sodium chloride, pH 7.3, 30 % glycerol, and 0.01 % sodium azide. |
| Preservative: | Sodium azide |
| Precaution of Use: | This product contains Sodium azide: a POISONOUS AND HAZARDOUS SUBSTANCE which should be handled by trained staff only. |
| Storage: | -20 °C |
| Storage Comment: | Shipped at 4°C. Upon delivery aliquot and store at -20°C for one year. Avoid freeze/thaw cycles. |
| Expiry Date: | 12 months |

Images



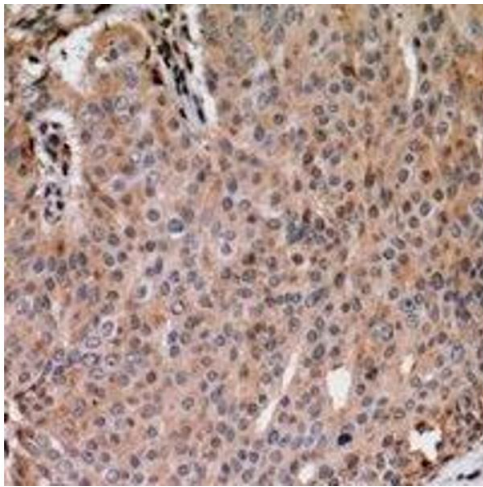
Western Blotting

Image 1. Western blot analysis of ANAPC1 (pS688) expression in HEK293 LPS-treated (A) whole cell lysates.



Immunofluorescence

Image 2. Immunofluorescent analysis of ANAPC1 (pS688) staining in HEK293T cells. Formalin-fixed cells were permeabilized with 0.1% Triton X-100 in TBS for 5-10 minutes and blocked with 3% BSA-PBS for 30 minutes at room temperature. Cells were probed with the prima



Immunohistochemistry

Image 3. Immunohistochemical analysis of ANAPC1 (pS688) staining in human breast cancer formalin fixed paraffin embedded tissue section. The section was pre-treated using heat mediated antigen retrieval with sodium citrate buffer (pH 6.0). The section was then inc