



Datasheet for ABIN7303450
anti-SRSF5 antibody



[Go to Product page](#)

3 Images

Overview

Quantity:	100 µL
Target:	SRSF5
Reactivity:	Human, Mouse, Rat, Monkey
Host:	Rabbit
Clonality:	Polyclonal
Conjugate:	This SRSF5 antibody is un-conjugated
Application:	Western Blotting (WB), Immunofluorescence (IF), Immunohistochemistry (IHC), Immunochromatography (IC)

Product Details

Immunogen:	KLH-conjugated synthetic peptide encompassing a sequence within the center region of human SRSF5.
Specificity:	Recognizes endogenous levels of SRSF5 protein.
Characteristics:	Rabbit polyclonal antibody to SRSF5
Purification:	The antibody was purified by affinity chromatography.

Target Details

Target:	SRSF5
Alternative Name:	SRSF5 (SRSF5 Products)
Background:	HRS, SFRS5, SRP40, Serine/arginine-rich splicing factor 5, Delayed-early protein HRS, Pre-mRNA-splicing factor SRP40, Splicing factor, arginine/serine-rich 5

Target Details

Gene ID:	6430, 20384, 29667
UniProt:	Q13243 , O35326 , Q09167
Pathways:	Ribonucleoprotein Complex Subunit Organization

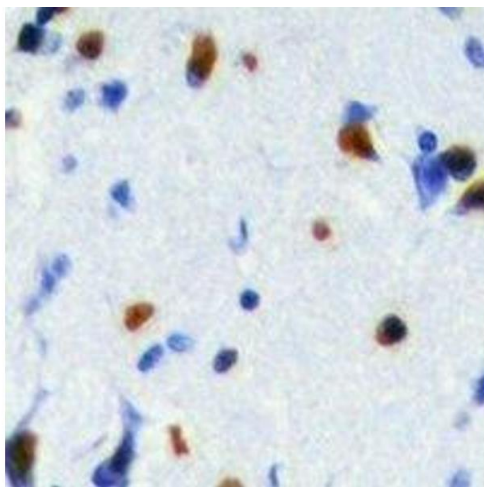
Application Details

Application Notes:	WB (1:500 - 1:2000), IH (1:50 - 1:200), IF/IC (1:50 - 1:100)
Restrictions:	For Research Use only

Handling

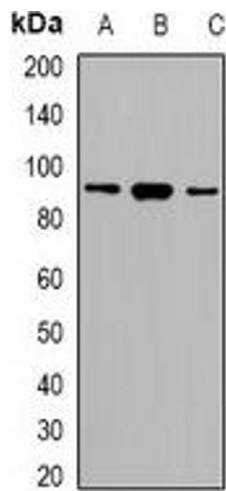
Format:	Liquid
Buffer:	Liquid in 0.42 % Potassium phosphate, 0.87 % Sodium chloride, pH 7.3, 30 % glycerol, and 0.01 % sodium azide.
Preservative:	Sodium azide
Precaution of Use:	This product contains Sodium azide: a POISONOUS AND HAZARDOUS SUBSTANCE which should be handled by trained staff only.
Storage:	-20 °C
Storage Comment:	Shipped at 4°C. Upon delivery aliquot and store at -20°C for one year. Avoid freeze/thaw cycles.
Expiry Date:	12 months

Images



Immunohistochemistry

Image 1. Immunohistochemical analysis of SRSF5 staining in human brain formalin fixed paraffin embedded tissue section. The section was pre-treated using heat mediated antigen retrieval with sodium citrate buffer (pH 6.0). The section was then incubated with the a



Western Blotting

Image 2. Western blot analysis of SRSF5 expression in HeLa (A), RAW264.7 (B), H9C2 (C) whole cell lysates.



Immunofluorescence

Image 3. Immunofluorescent analysis of SRSF5 staining in HeLa cells. Formalin-fixed cells were permeabilized with 0.1% Triton X-100 in TBS for 5-10 minutes and blocked with 3% BSA-PBS for 30 minutes at room temperature. Cells were probed with the primary antibody