

Datasheet for ABIN7303460
anti-STEAP2 antibody (C-Term)[Go to Product page](#)

3 Images

Overview

Quantity:	100 µL
Target:	STEAP2
Binding Specificity:	C-Term
Reactivity:	Human, Mouse, Rat, Cow
Host:	Rabbit
Clonality:	Polyclonal
Conjugate:	This STEAP2 antibody is un-conjugated
Application:	Immunohistochemistry (IHC), Western Blotting (WB), Immunofluorescence (IF), Immunochromatography (IC)

Product Details

Immunogen:	KLH-conjugated synthetic peptide encompassing a sequence within the C-term region of human STEAP2.
Specificity:	Recognizes endogenous levels of STEAP2 protein.
Characteristics:	Rabbit polyclonal antibody to STEAP2
Purification:	The antibody was purified by affinity chromatography.

Target Details

Target:	STEAP2
Alternative Name:	STEAP2 (STEAP2 Products)

Target Details

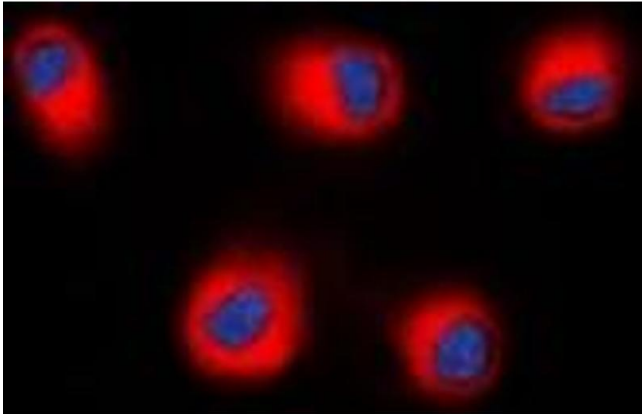
Background:	PCANAP1, STAMP1, Metalloreductase STEAP2, Prostate cancer-associated protein 1, Protein up-regulated in metastatic prostate cancer, PUMPCn, Six-transmembrane epithelial antigen of prostate 2, SixTransMembrane protein of prostate 1
Gene ID:	261729, 74051
UniProt:	Q8NFT2 , Q8BWB6
Pathways:	Transition Metal Ion Homeostasis

Application Details

Application Notes:	WB (1:500 - 1:2000), IH (1:50 - 1:200), IF/IC (1:50 - 1:100)
Restrictions:	For Research Use only

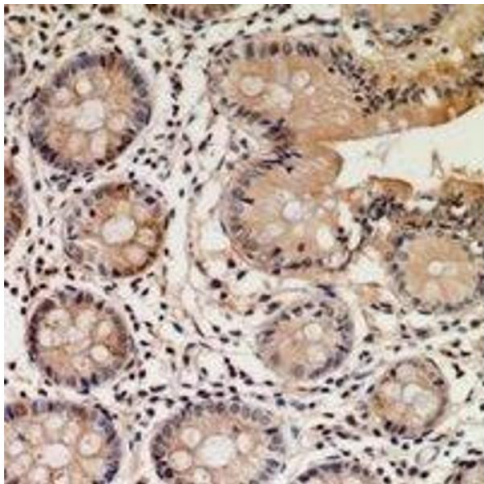
Handling

Format:	Liquid
Buffer:	Liquid in 0.42 % Potassium phosphate, 0.87 % Sodium chloride, pH 7.3, 30 % glycerol, and 0.01 % sodium azide.
Preservative:	Sodium azide
Precaution of Use:	This product contains Sodium azide: a POISONOUS AND HAZARDOUS SUBSTANCE which should be handled by trained staff only.
Storage:	-20 °C
Storage Comment:	Shipped at 4°C. Upon delivery aliquot and store at -20°C for one year. Avoid freeze/thaw cycles.
Expiry Date:	12 months



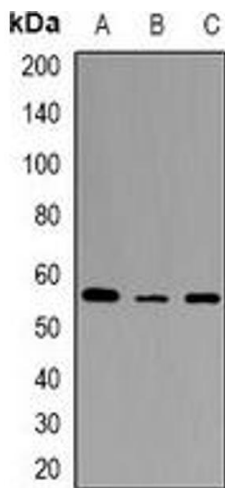
Immunofluorescence

Image 1. Immunofluorescent analysis of STEAP2 staining in HEK293T cells. Formalin-fixed cells were permeabilized with 0.1% Triton X-100 in TBS for 5-10 minutes and blocked with 3% BSA-PBS for 30 minutes at room temperature. Cells were probed with the primary antibody.



Immunohistochemistry

Image 2. Immunohistochemical analysis of STEAP2 staining in human colon cancer formalin fixed paraffin embedded tissue section. The section was pre-treated using heat mediated antigen retrieval with sodium citrate buffer (pH 6.0). The section was then incubated with the primary antibody.



Western Blotting

Image 3. Western blot analysis of STEAP2 expression in HEK293T (A), mouse spleen (B), rat spleen (C) whole cell lysates.