

Datasheet for ABIN7303468
anti-Cadherin 20 antibody

3 Images

[Go to Product page](#)

Overview

Quantity:	100 µL
Target:	Cadherin 20 (CDH20)
Reactivity:	Human, Mouse, Rat, Dog, Chicken, Monkey
Host:	Rabbit
Clonality:	Polyclonal
Conjugate:	This Cadherin 20 antibody is un-conjugated
Application:	Immunohistochemistry (IHC), Western Blotting (WB), Immunofluorescence (IF), Immunochromatography (IC)

Product Details

Immunogen:	KLH-conjugated synthetic peptide encompassing a sequence within the center region of human Cadherin 20.
Specificity:	Recognizes endogenous levels of Cadherin 20 protein.
Characteristics:	Rabbit polyclonal antibody to Cadherin 20
Purification:	The antibody was purified by affinity chromatography.

Target Details

Target:	Cadherin 20 (CDH20)
Alternative Name:	Cadherin 20 (CDH20 Products)
Background:	CDH7L3, Cadherin-20

Target Details

Gene ID:	28316, 23836, 363948
UniProt:	Q9HBT6 , Q9Z0M3 , Q5DWW1

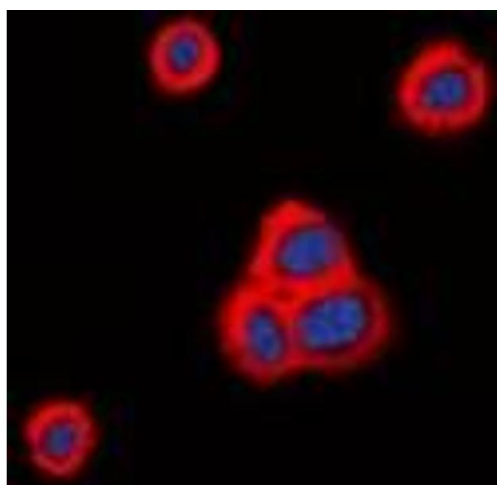
Application Details

Application Notes:	WB (1:500 - 1:2000), IH (1:50 - 1:200), IF/IC (1:50 - 1:100)
Restrictions:	For Research Use only

Handling

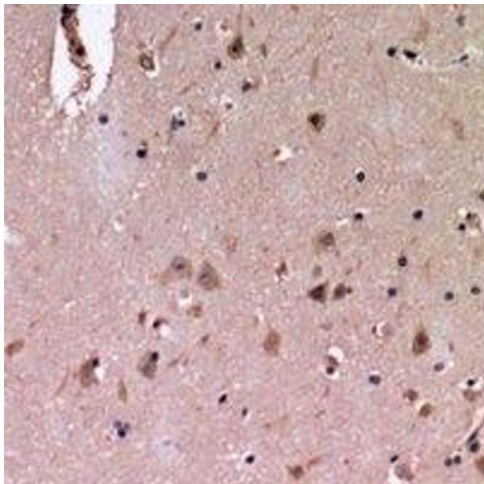
Format:	Liquid
Buffer:	Liquid in 0.42 % Potassium phosphate, 0.87 % Sodium chloride, pH 7.3, 30 % glycerol, and 0.01 % sodium azide.
Preservative:	Sodium azide
Precaution of Use:	This product contains Sodium azide: a POISONOUS AND HAZARDOUS SUBSTANCE which should be handled by trained staff only.
Storage:	-20 °C
Storage Comment:	Shipped at 4°C. Upon delivery aliquot and store at -20°C for one year. Avoid freeze/thaw cycles.
Expiry Date:	12 months

Images



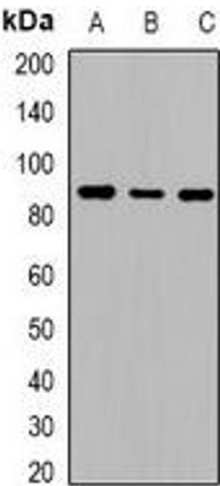
Immunofluorescence

Image 1. Immunofluorescent analysis of Cadherin 20 staining in HeLa cells. Formalin-fixed cells were permeabilized with 0.1% Triton X-100 in TBS for 5-10 minutes and blocked with 3% BSA-PBS for 30 minutes at room temperature. Cells were probed with the primary ant



Immunohistochemistry

Image 2. Immunohistochemical analysis of Cadherin 20 staining in human brain formalin fixed paraffin embedded tissue section. The section was pre-treated using heat mediated antigen retrieval with sodium citrate buffer (pH 6.0). The section was then incubated with



Western Blotting

Image 3. Western blot analysis of Cadherin 20 expression in HeLa (A), mouse liver (B), rat liver (C) whole cell lysates.