



[Go to Product page](#)

Datasheet for ABIN7303470

## anti-PEA15 antibody

### 2 Images

#### Overview

Quantity:	100 µL
Target:	PEA15
Reactivity:	Human, Mouse, Rat
Host:	Rabbit
Clonality:	Polyclonal
Conjugate:	This PEA15 antibody is un-conjugated
Application:	Western Blotting (WB), Immunofluorescence (IF), Immunochromatography (IC)

#### Product Details

Immunogen:	KLH-conjugated synthetic peptide encompassing a sequence within the center region of human PEA15.
Specificity:	Recognizes endogenous levels of PEA15 protein.
Characteristics:	Rabbit polyclonal antibody to PEA15
Purification:	The antibody was purified by affinity chromatography.

#### Target Details

Target:	PEA15
Alternative Name:	PEA15 ( <a href="#">PEA15 Products</a> )
Background:	Astrocytic phosphoprotein PEA-15, 15 kDa phosphoprotein enriched in astrocytes, Phosphoprotein enriched in diabetes, PED

## Target Details

Gene ID: 8682, 18611, 364052

UniProt: [Q15121](#), [Q62048](#), [Q5U318](#)

## Application Details

Application Notes: WB (1:500 - 1:2000), IF/IC (1:50 - 1:100)

Restrictions: For Research Use only

## Handling

Format: Liquid

Buffer: Liquid in 0.42 % Potassium phosphate, 0.87 % Sodium chloride, pH 7.3, 30 % glycerol, and 0.01 % sodium azide.

Preservative: Sodium azide

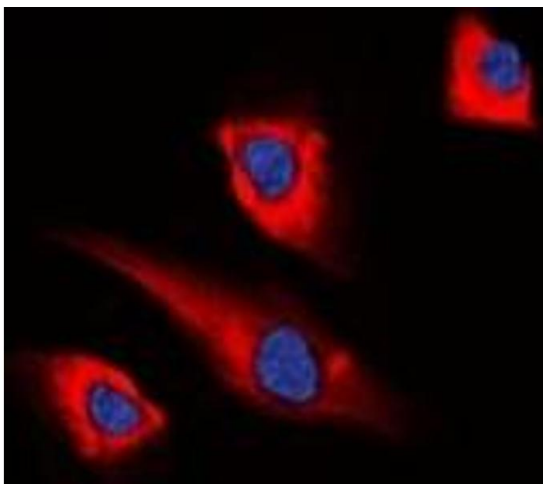
Precaution of Use: This product contains Sodium azide: a POISONOUS AND HAZARDOUS SUBSTANCE which should be handled by trained staff only.

Storage: -20 °C

Storage Comment: Shipped at 4°C. Upon delivery aliquot and store at -20°C for one year. Avoid freeze/thaw cycles.

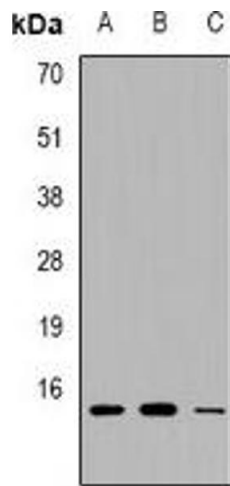
Expiry Date: 12 months

## Images



### Immunofluorescence

**Image 1.** Immunofluorescent analysis of PEA15 staining in HEK293T cells. Formalin-fixed cells were permeabilized with 0.1% Triton X-100 in TBS for 5-10 minutes and blocked with 3% BSA-PBS for 30 minutes at room temperature. Cells were probed with the primary antibo



### Western Blotting

**Image 2.** Western blot analysis of PEA15 expression in HEK293T (A), RAW264.7 (B), H9C2 (C) whole cell lysates.