

Datasheet for ABIN7303482  
**anti-GTPBP2 antibody (N-Term)**[Go to Product page](#)

## 2 Images

## Overview

Quantity:	100 µL
Target:	GTPBP2
Binding Specificity:	N-Term
Reactivity:	Human, Mouse
Host:	Rabbit
Clonality:	Polyclonal
Conjugate:	This GTPBP2 antibody is un-conjugated
Application:	Western Blotting (WB), Immunohistochemistry (IHC)

## Product Details

Immunogen:	KLH-conjugated synthetic peptide encompassing a sequence within the N-term region of human GTPBP2.
Specificity:	Recognizes endogenous levels of GTPBP2 protein.
Characteristics:	Rabbit polyclonal antibody to GTPBP2
Purification:	The antibody was purified by affinity chromatography.

## Target Details

Target:	GTPBP2
Alternative Name:	GTPBP2 ( <a href="#">GTPBP2 Products</a> )
Background:	GTP-binding protein 2

## Target Details

Gene ID:	54676, 56055
UniProt:	<a href="#">Q9BX10</a> , <a href="#">Q3UJK4</a>

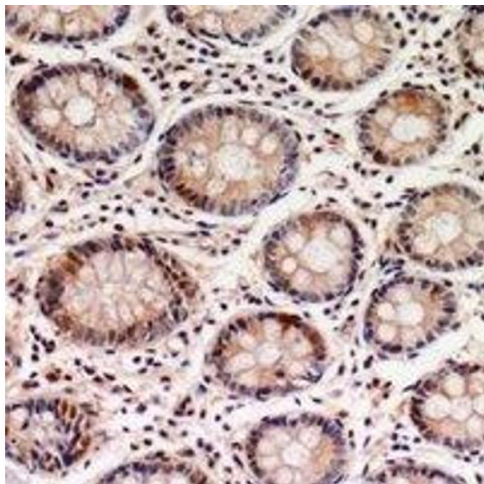
## Application Details

Application Notes:	WB (1:500 - 1:2000), IH (1:50 - 1:200)
Restrictions:	For Research Use only

## Handling

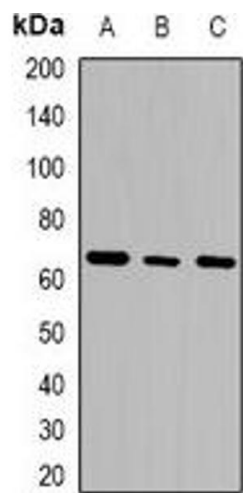
Format:	Liquid
Buffer:	Liquid in 0.42 % Potassium phosphate, 0.87 % Sodium chloride, pH 7.3, 30 % glycerol, and 0.01 % sodium azide.
Preservative:	Sodium azide
Precaution of Use:	This product contains Sodium azide: a POISONOUS AND HAZARDOUS SUBSTANCE which should be handled by trained staff only.
Storage:	-20 °C
Storage Comment:	Shipped at 4°C. Upon delivery aliquot and store at -20°C for one year. Avoid freeze/thaw cycles.
Expiry Date:	12 months

## Images



### Immunohistochemistry

**Image 1.** Immunohistochemical analysis of GTPBP2 staining in human colon cancer formalin fixed paraffin embedded tissue section. The section was pre-treated using heat mediated antigen retrieval with sodium citrate buffer (pH 6.0). The section was then incubated wi



Western Blotting

**Image 2.** Western blot analysis of GTPBP2 expression in THP1 (A), K562 (B), Jurkat (C) whole cell lysates.