



[Go to Product page](#)

Datasheet for ABIN7303514
anti-ZNF600 antibody

2 Images

Overview

Quantity:	100 µL
Target:	ZNF600
Reactivity:	Human, Mouse, Rat
Host:	Rabbit
Clonality:	Polyclonal
Conjugate:	This ZNF600 antibody is un-conjugated
Application:	Immunohistochemistry (IHC), Western Blotting (WB)

Product Details

Immunogen:	KLH-conjugated synthetic peptide encompassing a sequence within the center region of human ZNF600.
Specificity:	Recognizes endogenous levels of ZNF600 protein.
Characteristics:	Rabbit polyclonal antibody to ZNF600
Purification:	The antibody was purified by affinity chromatography.

Target Details

Target:	ZNF600
Alternative Name:	ZNF600 (ZNF600 Products)
Background:	Zinc finger protein 600
Gene ID:	162966

Target Details

UniProt: [Q6ZNG1](#)

Application Details

Application Notes: WB (1:500 - 1:2000), IH (1:50 - 1:200)

Restrictions: For Research Use only

Handling

Format: Liquid

Buffer: Liquid in 0.42 % Potassium phosphate, 0.87 % Sodium chloride, pH 7.3, 30 % glycerol, and 0.01 % sodium azide.

Preservative: Sodium azide

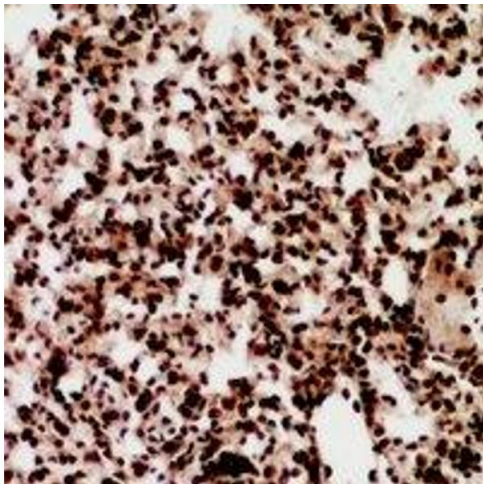
Precaution of Use: This product contains Sodium azide: a POISONOUS AND HAZARDOUS SUBSTANCE which should be handled by trained staff only.

Storage: -20 °C

Storage Comment: Shipped at 4°C. Upon delivery aliquot and store at -20°C for one year. Avoid freeze/thaw cycles.

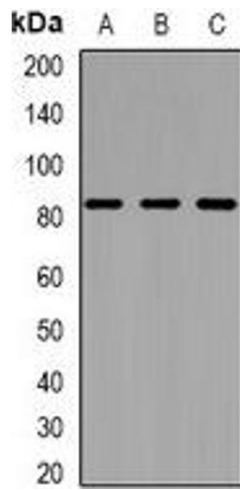
Expiry Date: 12 months

Images



Immunohistochemistry

Image 1. Immunohistochemical analysis of ZNF600 staining in human lung cancer formalin fixed paraffin embedded tissue section. The section was pre-treated using heat mediated antigen retrieval with sodium citrate buffer (pH 6.0). The section was then incubated with



Western Blotting

Image 2. Western blot analysis of ZNF600 expression in MCF7 (A), RAW264.7 (B), H9C2 (C) whole cell lysates.