



[Go to Product page](#)

Datasheet for ABIN7303520
anti-ZNF839 antibody

2 Images

Overview

Quantity:	100 µL
Target:	ZNF839
Reactivity:	Human, Rat, Mouse
Host:	Rabbit
Clonality:	Polyclonal
Conjugate:	This ZNF839 antibody is un-conjugated
Application:	Western Blotting (WB), Immunohistochemistry (IHC)

Product Details

Immunogen:	KLH-conjugated synthetic peptide encompassing a sequence within the center region of human ZNF839.
Specificity:	Recognizes endogenous levels of ZNF839 protein.
Characteristics:	Rabbit polyclonal antibody to ZNF839
Purification:	The antibody was purified by affinity chromatography.

Target Details

Target:	ZNF839
Alternative Name:	ZNF839 (ZNF839 Products)
Background:	C14orf131, Zinc finger protein 839, Renal carcinoma antigen NY-REN-50
Gene ID:	55778

Target Details

UniProt: [A8K0R7](#)

Application Details

Application Notes: WB (1:500 - 1:2000), IH (1:50 - 1:200)

Restrictions: For Research Use only

Handling

Format: Liquid

Buffer: Liquid in 0.42 % Potassium phosphate, 0.87 % Sodium chloride, pH 7.3, 30 % glycerol, and 0.01 % sodium azide.

Preservative: Sodium azide

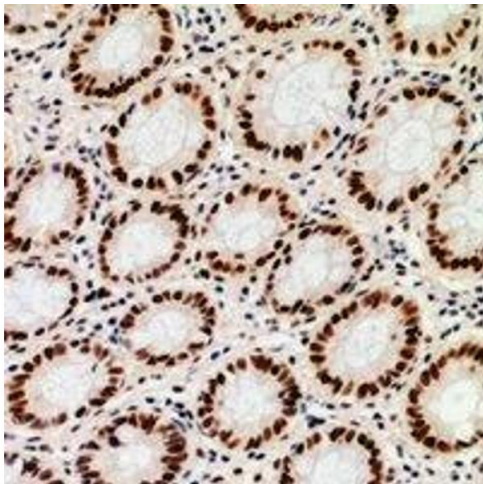
Precaution of Use: This product contains Sodium azide: a POISONOUS AND HAZARDOUS SUBSTANCE which should be handled by trained staff only.

Storage: -20 °C

Storage Comment: Shipped at 4°C. Upon delivery aliquot and store at -20°C for one year. Avoid freeze/thaw cycles.

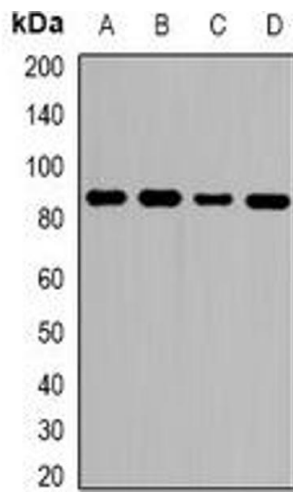
Expiry Date: 12 months

Images



Immunohistochemistry

Image 1. Immunohistochemical analysis of ZNF839 staining in human colon cancer formalin fixed paraffin embedded tissue section. The section was pre-treated using heat mediated antigen retrieval with sodium citrate buffer (pH 6.0). The section was then incubated wi



Western Blotting

Image 2. Western blot analysis of ZNF839 expression in HeLa (A), MCF7 (B), RAW264.7 (C), H9C2 (D) whole cell lysates.