

Datasheet for ABIN7303532

**anti-TXK antibody****2** Images[Go to Product page](#)

## Overview

|              |   |
|--------------|---|
| Quantity:    | 100 µL  |
| Target:      | TXK   |
| Reactivity:  | Human, Mouse, Rat                                 |
| Host:        | Rabbit  |
| Clonality:   | Polyclonal  |
| Conjugate:   | This TXK antibody is un-conjugated                |
| Application: | Western Blotting (WB), Immunohistochemistry (IHC) |

## Product Details

|                  |   |
|------------------|---|
| Immunogen:       | KLH-conjugated synthetic peptide encompassing a sequence within the center region of human RLK. |
| Specificity:     | Recognizes endogenous levels of RLK protein.  |
| Characteristics: | Rabbit polyclonal antibody to RLK   |
| Purification:    | The antibody was purified by affinity chromatography.   |

## Target Details

|                   |  |
|-------------------|--|
| Target:           | TXK  |
| Alternative Name: | RLK ( <a href="#">TXK Products</a> )   |
| Background:       | PTK4, RLK, Tyrosine-protein kinase TXK, Protein-tyrosine kinase 4, Resting lymphocyte kinase |
| Gene ID:          | 7294, 22165  |

## Target Details

|           |   |
|-----------|---|
| UniProt:  | <a href="#">P42681</a> , <a href="#">P42682</a>   |
| Pathways: | <a href="#">Regulation of Leukocyte Mediated Immunity</a> , <a href="#">Hepatitis C</a> |

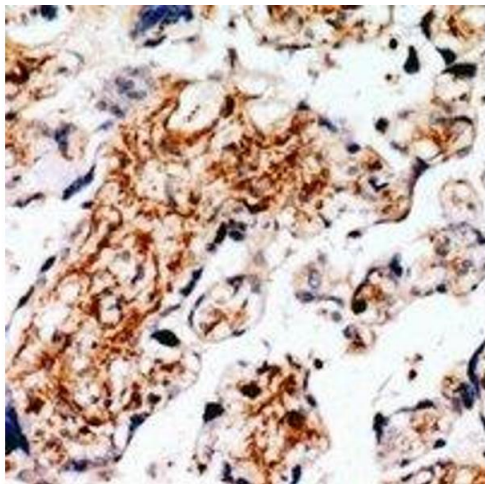
## Application Details

|                    |  |
|--------------------|--|
| Application Notes: | WB (1:500 - 1:2000), IH (1:50 - 1:200) |
| Restrictions:      | For Research Use only                  |

## Handling

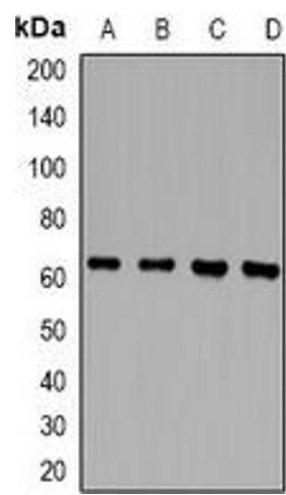
|                    |  |
|--------------------|--|
| Format:            | Liquid   |
| Buffer:            | Liquid in 0.42 % Potassium phosphate, 0.87 % Sodium chloride, pH 7.3, 30 % glycerol, and 0.01 % sodium azide.          |
| Preservative:      | Sodium azide   |
| Precaution of Use: | This product contains Sodium azide: a POISONOUS AND HAZARDOUS SUBSTANCE which should be handled by trained staff only. |
| Storage:           | -20 °C   |
| Storage Comment:   | Shipped at 4°C. Upon delivery aliquot and store at -20°C for one year. Avoid freeze/thaw cycles.                       |
| Expiry Date:       | 12 months  |

## Images



### Immunohistochemistry

**Image 1.** Immunohistochemical analysis of RLK staining in human placenta formalin fixed paraffin embedded tissue section. The section was pre-treated using heat mediated antigen retrieval with sodium citrate buffer (pH 6.0). The section was then incubated with the



Western Blotting

**Image 2.** Western blot analysis of RLK expression in Jurkat (A), THP1 (B), mouse spleen (C), rat spleen (D) whole cell lysates.