

Datasheet for ABIN7303534

**anti-LILRB5 antibody****2** Images[Go to Product page](#)

## Overview

Quantity:	100 µL
Target:	LILRB5
Reactivity:	Human, Mouse, Rat
Host:	Rabbit
Clonality:	Polyclonal
Conjugate:	This LILRB5 antibody is un-conjugated
Application:	Western Blotting (WB), Immunohistochemistry (IHC)

## Product Details

Immunogen:	KLH-conjugated synthetic peptide encompassing a sequence within the center region of human CD85c.
Specificity:	Recognizes endogenous levels of CD85c protein.
Characteristics:	Rabbit polyclonal antibody to CD85c
Purification:	The antibody was purified by affinity chromatography.

## Target Details

Target:	LILRB5
Alternative Name:	CD85c ( <a href="#">LILRB5 Products</a> )
Background:	LIR8, Leukocyte immunoglobulin-like receptor subfamily B member 5, CD85 antigen-like family member C, Leukocyte immunoglobulin-like receptor 8, LIR-8, CD85c

## Target Details

Gene ID: 10990

UniProt: [O75023](#)

## Application Details

Application Notes: WB (1:500 - 1:2000), IH (1:50 - 1:200)

Restrictions: For Research Use only

## Handling

Format: Liquid

Buffer: Liquid in 0.42 % Potassium phosphate, 0.87 % Sodium chloride, pH 7.3, 30 % glycerol, and 0.01 % sodium azide.

Preservative: Sodium azide

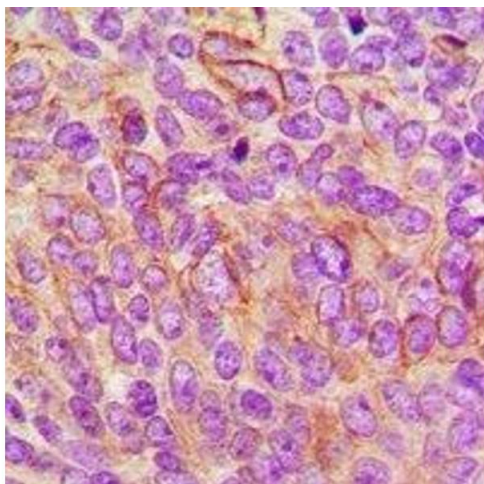
Precaution of Use: This product contains Sodium azide: a POISONOUS AND HAZARDOUS SUBSTANCE which should be handled by trained staff only.

Storage: -20 °C

Storage Comment: Shipped at 4°C. Upon delivery aliquot and store at -20°C for one year. Avoid freeze/thaw cycles.

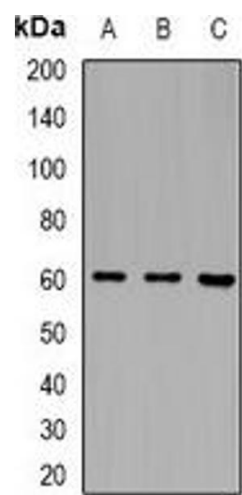
Expiry Date: 12 months

## Images



### Immunohistochemistry

**Image 1.** Immunohistochemical analysis of CD85c staining in human breast cancer formalin fixed paraffin embedded tissue section. The section was pre-treated using heat mediated antigen retrieval with sodium citrate buffer (pH 6.0). The section was then incubated wi



Western Blotting

**Image 2.** Western blot analysis of CD85c expression in MCF7 (A), mouse blood (B), rat blood (C) whole cell lysates.