



[Go to Product page](#)

Datasheet for ABIN7303542
anti-KLF13 antibody (acLys166)

1 Image

Overview

Quantity:	100 µL
Target:	KLF13
Binding Specificity:	acLys166
Reactivity:	Human, Mouse, Rat
Host:	Rabbit
Clonality:	Polyclonal
Conjugate:	This KLF13 antibody is un-conjugated
Application:	Western Blotting (WB)

Product Details

Immunogen:	KLH-conjugated synthetic peptide encompassing a sequence within the center region of human KLF13.
Specificity:	Recognizes endogenous levels of KLF13 (AcK166) protein.
Characteristics:	Rabbit polyclonal antibody to KLF13 (AcK166)
Purification:	The antibody was purified by affinity chromatography.

Target Details

Target:	KLF13
Alternative Name:	KLF13 (KLF13 Products)
Background:	BTEB3, NSLP1, Krueppel-like factor 13, Basic transcription element-binding protein 3, BTE-

Target Details

binding protein 3, Novel Sp1-like zinc finger transcription factor 1, RANTES factor of late activated T-lymphocytes 1, RFLAT-1, Transcription factor BTEB3, Transcription factor NSLP1

Gene ID: 51621, 50794

UniProt: [Q9Y2Y9](#), [Q9JJZ6](#)

Application Details

Application Notes: WB (1:500 - 1:2000)

Restrictions: For Research Use only

Handling

Format: Liquid

Buffer: Liquid in 0.42 % Potassium phosphate, 0.87 % Sodium chloride, pH 7.3, 30 % glycerol, and 0.01 % sodium azide.

Preservative: Sodium azide

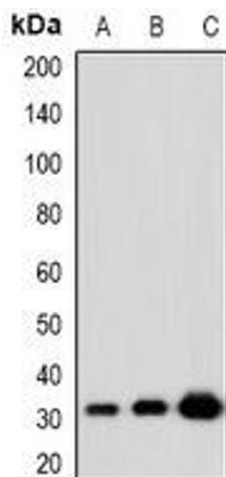
Precaution of Use: This product contains Sodium azide: a POISONOUS AND HAZARDOUS SUBSTANCE which should be handled by trained staff only.

Storage: -20 °C

Storage Comment: Shipped at 4°C. Upon delivery aliquot and store at -20°C for one year. Avoid freeze/thaw cycles.

Expiry Date: 12 months

Images



Western Blotting

Image 1. Western blot analysis of KLF13 (AcK166) expression in HeLa (A), NIH3T3 (B), PC12 (C) whole cell lysates.