

Datasheet for ABIN7303582

anti-ASF1A antibody**2** Images[Go to Product page](#)

Overview

Quantity:	100 µL
Target:	ASF1A
Reactivity:	Human, Mouse, Rat, Cow, Sheep, Chicken
Host:	Rabbit
Clonality:	Polyclonal
Conjugate:	This ASF1A antibody is un-conjugated
Application:	Western Blotting (WB), Immunofluorescence (IF), Immunochromatography (IC)

Product Details

Immunogen:	KLH-conjugated synthetic peptide encompassing a sequence within the center region of human ASF1A.
Specificity:	Recognizes endogenous levels of ASF1A protein.
Characteristics:	Rabbit polyclonal antibody to ASF1A
Purification:	The antibody was purified by affinity chromatography.

Target Details

Target:	ASF1A
Alternative Name:	ASF1A (ASF1A Products)
Background:	Histone chaperone ASF1A, Anti-silencing function protein 1 homolog A, hAsf1, hAsf1a, CCG1-interacting factor A, CIA, hCIA

Target Details

Gene ID:	25842, 66403
UniProt:	Q9Y294 , Q9CQE6

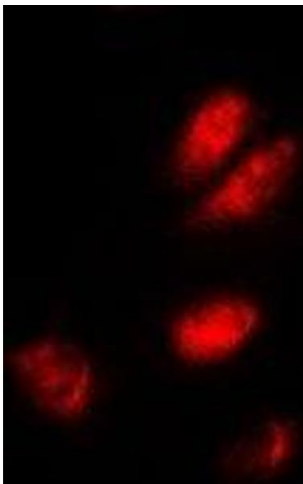
Application Details

Application Notes:	WB (1:500 - 1:2000), IF/IC (1:50 - 1:100)
Restrictions:	For Research Use only

Handling

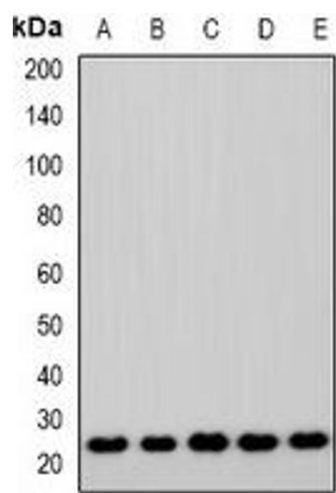
Format:	Liquid
Buffer:	Liquid in 0.42 % Potassium phosphate, 0.87 % Sodium chloride, pH 7.3, 30 % glycerol, and 0.01 % sodium azide.
Preservative:	Sodium azide
Precaution of Use:	This product contains Sodium azide: a POISONOUS AND HAZARDOUS SUBSTANCE which should be handled by trained staff only.
Storage:	-20 °C
Storage Comment:	Shipped at 4°C. Upon delivery aliquot and store at -20°C for one year. Avoid freeze/thaw cycles.
Expiry Date:	12 months

Images



Immunofluorescence

Image 1. Immunofluorescent analysis of ASF1A staining in A549 cells. Formalin-fixed cells were permeabilized with 0.1% Triton X-100 in TBS for 5-10 minutes and blocked with 3% BSA-PBS for 30 minutes at room temperature. Cells were probed with the primary antibody



Western Blotting

Image 2. Western blot analysis of ASF1A expression in Jurkat (A), A549 (B), MCF7 (C), mouse lung (D), rat lung (E) whole cell lysates.