

Datasheet for ABIN7303588
anti-ALPK1 antibody (N-Term)

3 Images

[Go to Product page](#)

Overview

| | |
|----------------------|----------------------------------------------------------------------------------------------------------|
| Quantity: | 100 µL |
| Target: | ALPK1 |
| Binding Specificity: | N-Term |
| Reactivity: | Human |
| Host: | Rabbit |
| Clonality: | Polyclonal |
| Conjugate: | This ALPK1 antibody is un-conjugated |
| Application: | Western Blotting (WB), Immunohistochemistry (IHC), Immunofluorescence (IF), Immunochromatography (IC) |

Product Details

| | |
|------------------|---------------------------------------------------------------------------------------------------|
| Immunogen: | KLH-conjugated synthetic peptide encompassing a sequence within the N-term region of human ALPK1. |
| Specificity: | Recognizes endogenous levels of ALPK1 protein. |
| Characteristics: | Rabbit polyclonal antibody to ALPK1 |
| Purification: | The antibody was purified by affinity chromatography. |

Target Details

| | |
|-------------------|------------------------------------------|
| Target: | ALPK1 |
| Alternative Name: | ALPK1 (ALPK1 Products) |

Target Details

| | |
|-------------|---------------------------------------------------------------------------------------------|
| Background: | KIAA1527, LAK, Alpha-protein kinase 1, Chromosome 4 kinase, Lymphocyte alpha-protein kinase |
| Gene ID: | 80216 |
| UniProt: | Q96QP1 |

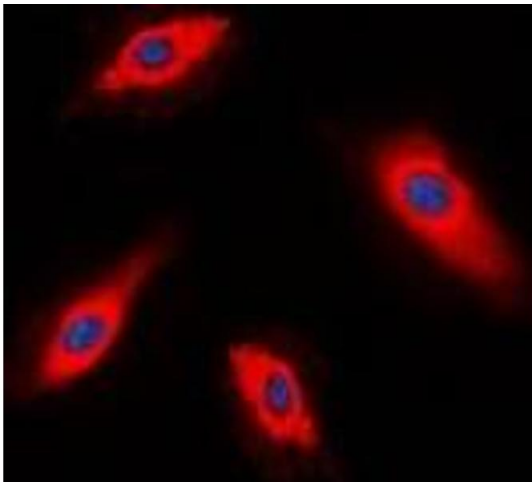
Application Details

| | |
|--------------------|--------------------------------------------------------------|
| Application Notes: | WB (1:500 - 1:2000), IH (1:50 - 1:200), IF/IC (1:50 - 1:100) |
| Restrictions: | For Research Use only |

Handling

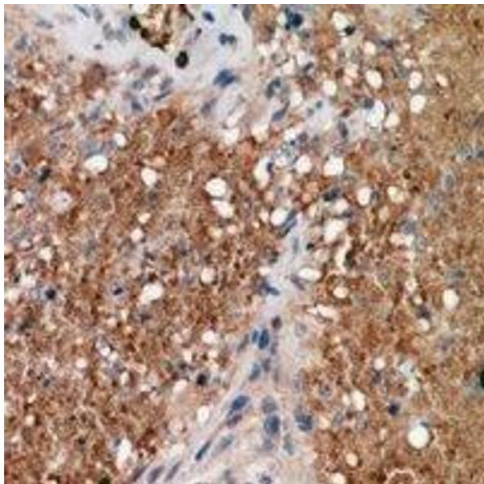
| | |
|--------------------|------------------------------------------------------------------------------------------------------------------------|
| Format: | Liquid |
| Buffer: | Liquid in 0.42 % Potassium phosphate, 0.87 % Sodium chloride, pH 7.3, 30 % glycerol, and 0.01 % sodium azide. |
| Preservative: | Sodium azide |
| Precaution of Use: | This product contains Sodium azide: a POISONOUS AND HAZARDOUS SUBSTANCE which should be handled by trained staff only. |
| Storage: | -20 °C |
| Storage Comment: | Shipped at 4°C. Upon delivery aliquot and store at -20°C for one year. Avoid freeze/thaw cycles. |
| Expiry Date: | 12 months |

Images



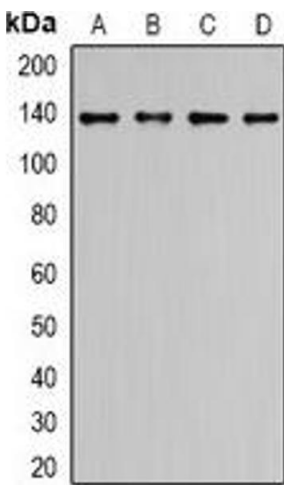
Immunofluorescence

Image 1. Immunofluorescent analysis of ALPK1 staining in HepG2 cells. Formalin-fixed cells were permeabilized with 0.1% Triton X-100 in TBS for 5-10 minutes and blocked with 3% BSA-PBS for 30 minutes at room temperature. Cells were probed with the primary antibody



Immunohistochemistry

Image 2. Immunohistochemical analysis of ALPK1 staining in human breast cancer formalin fixed paraffin embedded tissue section. The section was pre-treated using heat mediated antigen retrieval with sodium citrate buffer (pH 6.0). The section was then incubated wi



Western Blotting

Image 3. Western blot analysis of ALPK1 expression in LO2 (A), HCT116 (B), COLO205 (C), HepG2 (D) whole cell lysates.