

Datasheet for ABIN7303628
anti-DCLK2 antibody (N-Term)[Go to Product page](#)

2 Images

Overview

Quantity:	100 µL
Target:	DCLK2
Binding Specificity:	N-Term
Reactivity:	Human, Mouse, Rat
Host:	Rabbit
Clonality:	Polyclonal
Conjugate:	This DCLK2 antibody is un-conjugated
Application:	Western Blotting (WB), Immunofluorescence (IF), Immunochromatography (IC)

Product Details

Immunogen:	KLH-conjugated synthetic peptide encompassing a sequence within the N-term region of human DCLK2.
Specificity:	Recognizes endogenous levels of DCLK2 protein.
Characteristics:	Rabbit polyclonal antibody to DCLK2
Purification:	The antibody was purified by affinity chromatography.

Target Details

Target:	DCLK2
Alternative Name:	DCLK2 (DCLK2 Products)
Background:	DCAMKL2, DCDC3B, DCK2, Serine/threonine-protein kinase DCLK2, CaMK-like CREB regulatory

Target Details

	kinase 2, CL2, CLICK-II, CLICK2, Doublecortin domain-containing protein 3B, Doublecortin-like and CAM kinase-like 2, Doublecortin-like kinase 2
Gene ID:	166614, 70762, 310698
UniProt:	Q8N568 , Q6PGN3 , Q5MPA9

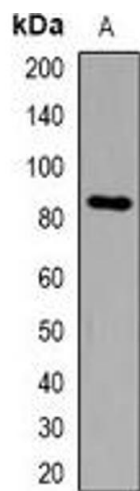
Application Details

Application Notes:	WB (1:500 - 1:2000), IF/IC (1:50 - 1:100)
Restrictions:	For Research Use only

Handling

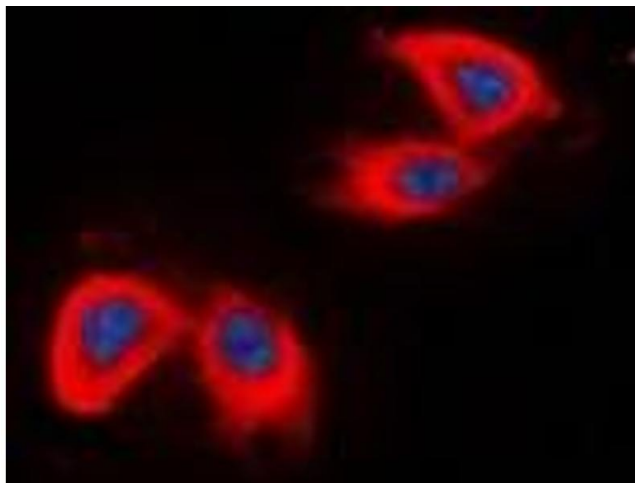
Format:	Liquid
Buffer:	Liquid in 0.42 % Potassium phosphate, 0.87 % Sodium chloride, pH 7.3, 30 % glycerol, and 0.01 % sodium azide.
Preservative:	Sodium azide
Precaution of Use:	This product contains Sodium azide: a POISONOUS AND HAZARDOUS SUBSTANCE which should be handled by trained staff only.
Storage:	-20 °C
Storage Comment:	Shipped at 4°C. Upon delivery aliquot and store at -20°C for one year. Avoid freeze/thaw cycles.
Expiry Date:	12 months

Images



Western Blotting

Image 1. Western blot analysis of DCLK2 expression in HepG2 (A) whole cell lysates.



Immunofluorescence

Image 2. Immunofluorescent analysis of DCLK2 staining in HepG2 cells. Formalin-fixed cells were permeabilized with 0.1% Triton X-100 in TBS for 5-10 minutes and blocked with 3% BSA-PBS for 30 minutes at room temperature. Cells were probed with the primary antibody