

Datasheet for ABIN7303630

anti-ITPK1 antibody[Go to Product page](#)**1** Image

Overview

Quantity:	100 µL
Target:	ITPK1
Reactivity:	Human, Mouse, Rat, Cow, Pig, Chicken
Host:	Rabbit
Clonality:	Polyclonal
Conjugate:	This ITPK1 antibody is un-conjugated
Application:	Western Blotting (WB)

Product Details

Immunogen:	KLH-conjugated synthetic peptide encompassing a sequence within the center region of human ITPK1.
Specificity:	Recognizes endogenous levels of ITPK1 protein.
Characteristics:	Rabbit polyclonal antibody to ITPK1
Purification:	The antibody was purified by affinity chromatography.

Target Details

Target:	ITPK1
Alternative Name:	ITPK1 (ITPK1 Products)
Background:	Inositol-tetrakisphosphate 1-kinase, Inositol 1,3,4-trisphosphate 5/6-kinase, Inositol-triphosphate 5/6-kinase, Ins(1,3,4)P(3) 5/6-kinase

Target Details

Gene ID:	3705, 217837
UniProt:	Q13572 , Q8BYN3

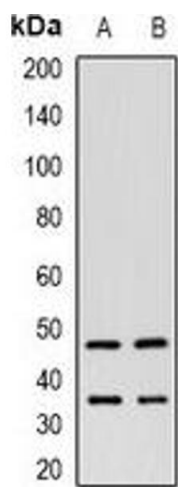
Application Details

Application Notes:	WB (1:500 - 1:2000)
Restrictions:	For Research Use only

Handling

Format:	Liquid
Buffer:	Liquid in 0.42 % Potassium phosphate, 0.87 % Sodium chloride, pH 7.3, 30 % glycerol, and 0.01 % sodium azide.
Preservative:	Sodium azide
Precaution of Use:	This product contains Sodium azide: a POISONOUS AND HAZARDOUS SUBSTANCE which should be handled by trained staff only.
Storage:	-20 °C
Storage Comment:	Shipped at 4°C. Upon delivery aliquot and store at -20°C for one year. Avoid freeze/thaw cycles.
Expiry Date:	12 months

Images



Western Blotting

Image 1. Western blot analysis of ITPK1 expression in HeLa (A), HepG2 (B) whole cell lysates.