



[Go to Product page](#)

Datasheet for ABIN7303666

anti-Desmoglein 1 antibody (N-Term)

2 Images

Overview

Quantity:	100 µL
Target:	Desmoglein 1 (DSG1)
Binding Specificity:	N-Term
Reactivity:	Human, Mouse, Cow, Dog, Monkey, Pig
Host:	Rabbit
Clonality:	Polyclonal
Conjugate:	This Desmoglein 1 antibody is un-conjugated
Application:	Western Blotting (WB), Immunohistochemistry (IHC)

Product Details

Immunogen:	KLH-conjugated synthetic peptide encompassing a sequence within the N-term region of human Desmoglein 1.
Specificity:	Recognizes endogenous levels of Desmoglein 1 protein.
Characteristics:	Rabbit polyclonal antibody to Desmoglein 1
Purification:	The antibody was purified by affinity chromatography.

Target Details

Target:	Desmoglein 1 (DSG1)
Alternative Name:	Desmoglein 1 (DSG1 Products)
Background:	CDHF4, Desmoglein-1, Cadherin family member 4, Desmosomal glycoprotein 1, DG1, DGI,

Target Details

Pemphigus foliaceus antigen

Gene ID: 1828

UniProt: [Q02413](#)

Pathways: [Cell-Cell Junction Organization](#)

Application Details

Application Notes: WB (1:500 - 1:2000), IH (1:50 - 1:200)

Restrictions: For Research Use only

Handling

Format: Liquid

Buffer: Liquid in 0.42 % Potassium phosphate, 0.87 % Sodium chloride, pH 7.3, 30 % glycerol, and 0.01 % sodium azide.

Preservative: Sodium azide

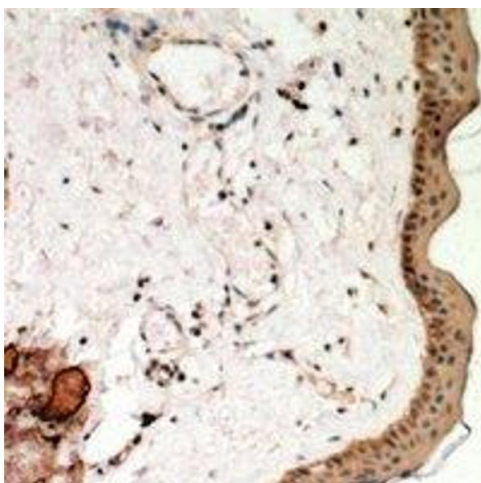
Precaution of Use: This product contains Sodium azide: a POISONOUS AND HAZARDOUS SUBSTANCE which should be handled by trained staff only.

Storage: -20 °C

Storage Comment: Shipped at 4°C. Upon delivery aliquot and store at -20°C for one year. Avoid freeze/thaw cycles.

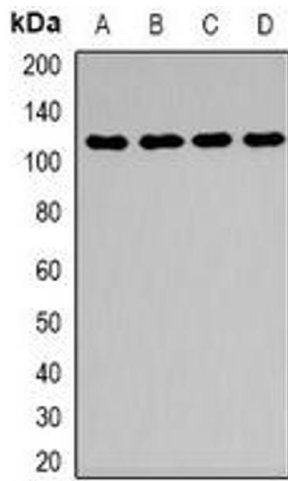
Expiry Date: 12 months

Images



Immunohistochemistry

Image 1. Immunohistochemical analysis of Desmoglein 1 staining in human skin formalin fixed paraffin embedded tissue section. The section was pre-treated using heat mediated antigen retrieval with sodium citrate buffer (pH 6.0). The section was then incubated with



Western Blotting

Image 2. Western blot analysis of Desmoglein 1 expression in HEK293T (A), mouse kidney (B), mouse brain (C), mouse lung (D) whole cell lysates.