



[Go to Product page](#)

Datasheet for ABIN7303678

anti-IDH3A antibody

2 Images

Overview

Quantity:	100 µL
Target:	IDH3A
Reactivity:	Human, Rat, Mouse, Cow, Monkey
Host:	Rabbit
Clonality:	Polyclonal
Conjugate:	This IDH3A antibody is un-conjugated
Application:	Western Blotting (WB), Immunohistochemistry (IHC)

Product Details

Immunogen:	KLH-conjugated synthetic peptide encompassing a sequence within the center region of human IDH3 alpha.
Specificity:	Recognizes endogenous levels of IDH3 alpha protein.
Characteristics:	Rabbit polyclonal antibody to IDH3 alpha
Purification:	The antibody was purified by affinity chromatography.

Target Details

Target:	IDH3A
Alternative Name:	IDH3 alpha (IDH3A Products)
Background:	Isocitrate dehydrogenase [NAD] subunit alpha, mitochondrial, Isocitric dehydrogenase subunit alpha, NAD(+)-specific ICDH subunit alpha

Target Details

Gene ID: 3419, 67834, 114096

UniProt: [P50213](#), [Q9D6R2](#), [Q99NA5](#)

Application Details

Application Notes: WB (1:500 - 1:2000), IH (1:50 - 1:200)

Restrictions: For Research Use only

Handling

Format: Liquid

Buffer: Liquid in 0.42 % Potassium phosphate, 0.87 % Sodium chloride, pH 7.3, 30 % glycerol, and 0.01 % sodium azide.

Preservative: Sodium azide

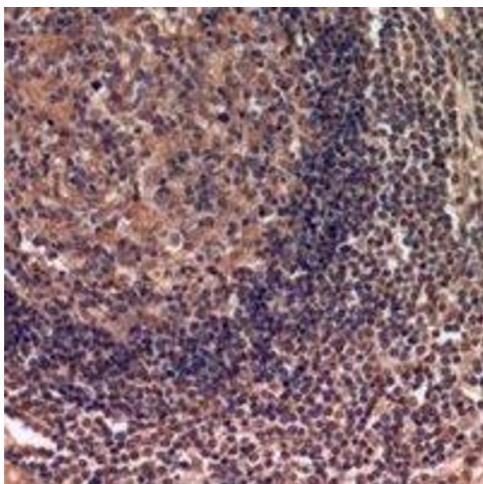
Precaution of Use: This product contains Sodium azide: a POISONOUS AND HAZARDOUS SUBSTANCE which should be handled by trained staff only.

Storage: -20 °C

Storage Comment: Shipped at 4°C. Upon delivery aliquot and store at -20°C for one year. Avoid freeze/thaw cycles.

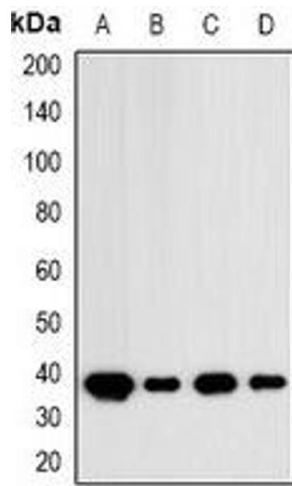
Expiry Date: 12 months

Images



Immunohistochemistry

Image 1. Immunohistochemical analysis of IDH3 alpha staining in human lymph gland formalin fixed paraffin embedded tissue section. The section was pre-treated using heat mediated antigen retrieval with sodium citrate buffer (pH 6.0). The section was then incubated



Western Blotting

Image 2. Western blot analysis of IDH3 alpha expression in MCF7 (A), HT29 (B), mouse brain (C), mouse kidney (D) whole cell lysates.