



[Go to Product page](#)

Datasheet for ABIN7303722  
**anti-MID1 antibody (N-Term)**

3 Images

### Overview

Quantity:	100 µL
Target:	MID1
Binding Specificity:	N-Term
Reactivity:	Human, Mouse, Rat, Dog, Monkey
Host:	Rabbit
Clonality:	Polyclonal
Conjugate:	This MID1 antibody is un-conjugated
Application:	Western Blotting (WB), Immunohistochemistry (IHC), Immunofluorescence (IF), Immunochromatography (IC)

### Product Details

Immunogen:	KLH-conjugated synthetic peptide encompassing a sequence within the N-term region of human MID1.
Specificity:	Recognizes endogenous levels of MID1 protein.
Characteristics:	Rabbit polyclonal antibody to MID1
Purification:	The antibody was purified by immunogen affinity chromatography.

### Target Details

Target:	MID1
Alternative Name:	MID1 ( <a href="#">MID1 Products</a> )

## Target Details

---

Background:	FXY, RNF59, TRIM18, XPRF, E3 ubiquitin-protein ligase Midline-1, Midin, Putative transcription factor XPRF, RING finger protein 59, RING finger protein Midline-1, Tripartite motif-containing protein 18
Gene ID:	4281, 17318, 54252
UniProt:	<a href="#">O15344</a> , <a href="#">O70583</a> , <a href="#">P82458</a>

## Application Details

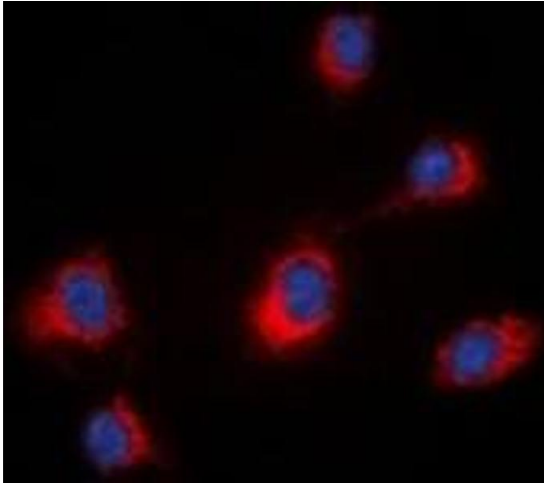
---

Application Notes:	WB (1:500 - 1:1000), IH (1:100 - 1:200), IF/IC (1:100 - 1:500)
Restrictions:	For Research Use only

## Handling

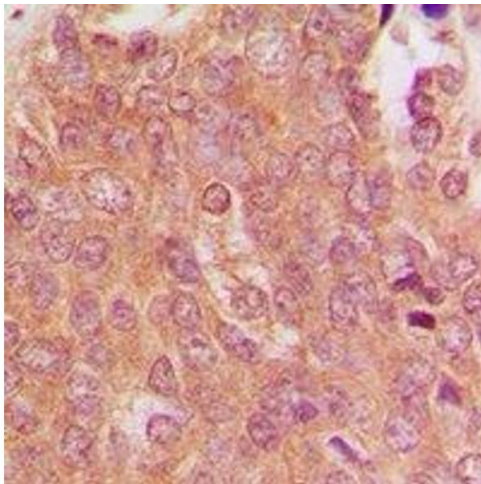
---

Format:	Liquid
Buffer:	Liquid in 0.42 % Potassium phosphate, 0.87 % Sodium chloride, pH 7.3, 30 % glycerol, and 0.01 % sodium azide.
Preservative:	Sodium azide
Precaution of Use:	This product contains Sodium azide: a POISONOUS AND HAZARDOUS SUBSTANCE which should be handled by trained staff only.
Storage:	-20 °C
Storage Comment:	Shipped at 4°C. Upon delivery aliquot and store at -20°C for one year. Avoid freeze/thaw cycles.
Expiry Date:	12 months



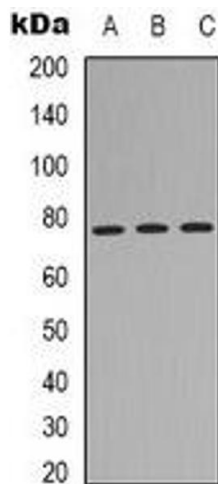
### Immunofluorescence

**Image 1.** Immunofluorescent analysis of MID1 staining in HeLa cells. Formalin-fixed cells were permeabilized with 0.1% Triton X-100 in TBS for 5-10 minutes and blocked with 3% BSA-PBS for 30 minutes at room temperature. Cells were probed with the primary antibody i



### Immunohistochemistry

**Image 2.** Immunohistochemical analysis of MID1 staining in human breast cancer formalin fixed paraffin embedded tissue section. The section was pre-treated using heat mediated antigen retrieval with sodium citrate buffer (pH 6.0). The section was then incubated wit



### Western Blotting

**Image 3.** Western blot analysis of MID1 expression in HEK293T (A), A431 (B), HeLa (C) whole cell lysates.