

Datasheet for ABIN7303734  
**anti-BRCA1 antibody (C-Term, pSer1423)**



[Go to Product page](#)

**3** Images

## Overview

Quantity:	100 µL
Target:	BRCA1
Binding Specificity:	C-Term, pSer1423
Reactivity:	Human, Rat, Monkey
Host:	Rabbit
Clonality:	Polyclonal
Conjugate:	This BRCA1 antibody is un-conjugated
Application:	Western Blotting (WB), Immunohistochemistry (IHC), Immunofluorescence (IF), Immunochromatography (IC)

## Product Details

Immunogen:	KLH-conjugated synthetic peptide encompassing a sequence within the C-term region of human BRCA1 (pS1423).
Specificity:	Recognizes endogenous levels of BRCA1 (pS1423) protein.
Characteristics:	Rabbit polyclonal antibody to BRCA1 (pS1423)
Purification:	The antibody was purified by immunogen affinity chromatography.

## Target Details

Target:	BRCA1
Alternative Name:	BRCA1 ( <a href="#">BRCA1 Products</a> )

### Target Details

Background:	RNF53, Breast cancer type 1 susceptibility protein, RING finger protein 53
Gene ID:	672, 497672
UniProt:	<a href="#">P38398</a> , <a href="#">O54952</a>
Pathways:	<a href="#">Cell Division Cycle</a> , <a href="#">DNA Damage Repair</a> , <a href="#">Intracellular Steroid Hormone Receptor Signaling Pathway</a> , <a href="#">Positive Regulation of Response to DNA Damage Stimulus</a>

### Application Details

Application Notes:	WB (1:500 - 1:1000), IH (1:100 - 1:200), IF/IC (1:100 - 1:500)
Restrictions:	For Research Use only

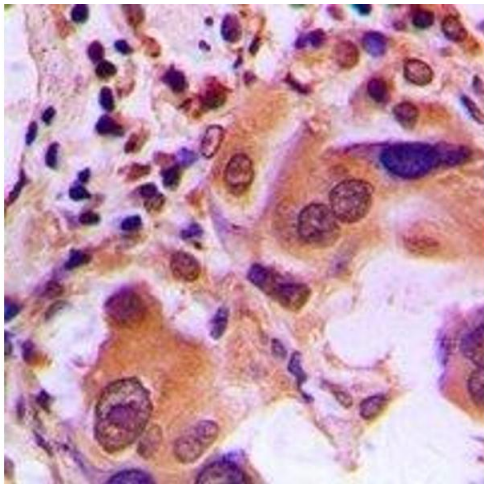
### Handling

Format:	Liquid
Buffer:	Liquid in 0.42 % Potassium phosphate, 0.87 % Sodium chloride, pH 7.3, 30 % glycerol, and 0.01 % sodium azide.
Preservative:	Sodium azide
Precaution of Use:	This product contains Sodium azide: a POISONOUS AND HAZARDOUS SUBSTANCE which should be handled by trained staff only.
Storage:	-20 °C
Storage Comment:	Shipped at 4°C. Upon delivery aliquot and store at -20°C for one year. Avoid freeze/thaw cycles.
Expiry Date:	12 months



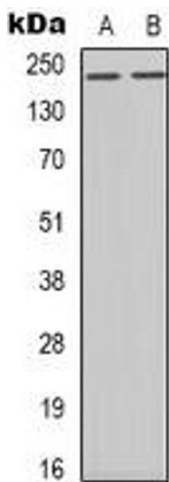
**Immunofluorescence**

**Image 1.** Immunofluorescent analysis of BRCA1 (pS1423) staining in HeLa cells. Formalin-fixed cells were permeabilized with 0.1% Triton X-100 in TBS for 5-10 minutes and blocked with 3% BSA-PBS for 30 minutes at room temperature. Cells were probed with the primary



**Immunohistochemistry**

**Image 2.** Immunohistochemical analysis of BRCA1 (pS1423) staining in human lung cancer formalin fixed paraffin embedded tissue section. The section was pre-treated using heat mediated antigen retrieval with sodium citrate buffer (pH 6.0). The section was then incub



**Western Blotting**

**Image 3.** Western blot analysis of BRCA1 (pS1423) expression in Hela UV-treated (A), K562 UV-treated (B) whole cell lysates.