

Datasheet for ABIN7303788

anti-STX1A antibody (N-Term, pSer14)**3** Images[Go to Product page](#)

Overview

Quantity:	100 µL
Target:	STX1A
Binding Specificity:	N-Term, pSer14
Reactivity:	Human, Mouse, Rat, Cow, Monkey
Host:	Rabbit
Clonality:	Polyclonal
Conjugate:	This STX1A antibody is un-conjugated
Application:	Western Blotting (WB), Immunohistochemistry (IHC), Immunofluorescence (IF), Immunochromatography (IC)

Product Details

Immunogen:	KLH-conjugated synthetic peptide encompassing a sequence within the N-term region of human Syntaxin 1A (pS14).
Specificity:	Recognizes endogenous levels of Syntaxin 1A (pS14) protein.
Characteristics:	Rabbit polyclonal antibody to Syntaxin 1A (pS14)
Purification:	The antibody was purified by immunogen affinity chromatography.

Target Details

Target:	STX1A
Alternative Name:	Syntaxin 1A (STX1A Products)

Target Details

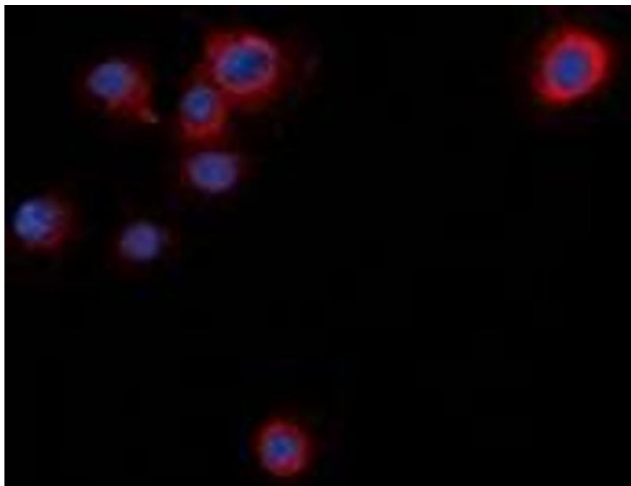
Background:	STX1, Syntaxin-1A, Neuron-specific antigen HPC-1
Gene ID:	6804, 20907, 116470
UniProt:	Q16623 , O35526 , P32851
Pathways:	Peptide Hormone Metabolism , Synaptic Membrane , Synaptic Vesicle Exocytosis , Dicarboxylic Acid Transport

Application Details

Application Notes:	WB (1:500 - 1:1000), IH (1:100 - 1:200), IF/IC (1:100 - 1:500)
Restrictions:	For Research Use only

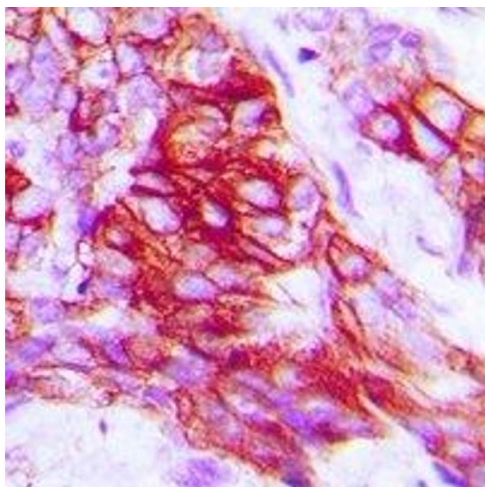
Handling

Format:	Liquid
Buffer:	Liquid in 0.42 % Potassium phosphate, 0.87 % Sodium chloride, pH 7.3, 30 % glycerol, and 0.01 % sodium azide.
Preservative:	Sodium azide
Precaution of Use:	This product contains Sodium azide: a POISONOUS AND HAZARDOUS SUBSTANCE which should be handled by trained staff only.
Storage:	-20 °C
Storage Comment:	Shipped at 4°C. Upon delivery aliquot and store at -20°C for one year. Avoid freeze/thaw cycles.
Expiry Date:	12 months



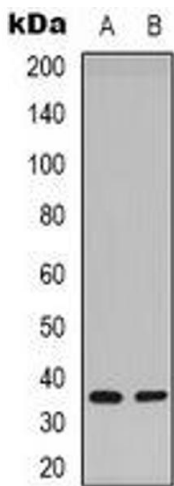
Immunofluorescence

Image 1. Immunofluorescent analysis of Syntaxin 1A (pS14) staining in NIH3T3 cells. Formalin-fixed cells were permeabilized with 0.1% Triton X-100 in TBS for 5-10 minutes and blocked with 3% BSA-PBS for 30 minutes at room temperature. Cells were probed with the pr



Immunohistochemistry

Image 2. Immunohistochemical analysis of Syntaxin 1A (pS14) staining in human prostate cancer formalin fixed paraffin embedded tissue section. The section was pre-treated using heat mediated antigen retrieval with sodium citrate buffer (pH 6.0). The section was th



Western Blotting

Image 3. Western blot analysis of Syntaxin 1A (pS14) expression in Hela (A), mouse brain (B) whole cell lysates.