

Datasheet for ABIN7303826

**anti-DCP1A antibody****3** Images[Go to Product page](#)

## Overview

|              |  |
|--------------|--|
| Quantity:    | 100 µL   |
| Target:      | DCP1A  |
| Reactivity:  | Human, Mouse   |
| Host:        | Rabbit   |
| Clonality:   | Polyclonal   |
| Conjugate:   | This DCP1A antibody is un-conjugated   |
| Application: | Western Blotting (WB), Immunohistochemistry (IHC), Immunofluorescence (IF),<br>Immunochromatography (IC) |

## Product Details

|                  |   |
|------------------|---|
| Immunogen:       | KLH-conjugated synthetic peptide encompassing a sequence within the center region of human DCP1A. |
| Specificity:     | Recognizes endogenous levels of DCP1A protein.  |
| Characteristics: | Rabbit polyclonal antibody to DCP1A   |
| Purification:    | The antibody was purified by immunogen affinity chromatography.                                   |

## Target Details

|                   |  |
|-------------------|--|
| Target:           | DCP1A  |
| Alternative Name: | DCP1A ( <a href="#">DCP1A Products</a> )   |
| Background:       | SMIF, mRNA-decapping enzyme 1A, Smad4-interacting transcriptional co-activator,<br>Transcription factor SMIF |

## Target Details

Gene ID: 55802, 75901

UniProt: [Q9NPI6](#), [Q91YD3](#)

## Application Details

Application Notes: WB (1:500 - 1:1000), IH (1:100 - 1:200), IF/IC (1:100 - 1:500)

Restrictions: For Research Use only

## Handling

Format: Liquid

Buffer: Liquid in 0.42 % Potassium phosphate, 0.87 % Sodium chloride, pH 7.3, 30 % glycerol, and 0.01 % sodium azide.

Preservative: Sodium azide

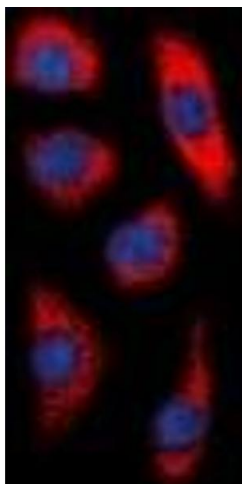
Precaution of Use: This product contains Sodium azide: a POISONOUS AND HAZARDOUS SUBSTANCE which should be handled by trained staff only.

Storage: -20 °C

Storage Comment: Shipped at 4°C. Upon delivery aliquot and store at -20°C for one year. Avoid freeze/thaw cycles.

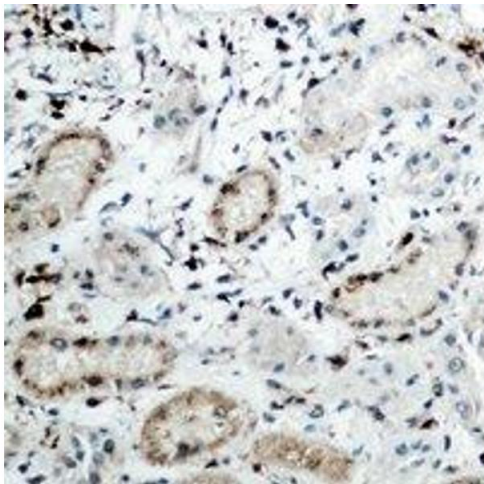
Expiry Date: 12 months

## Images



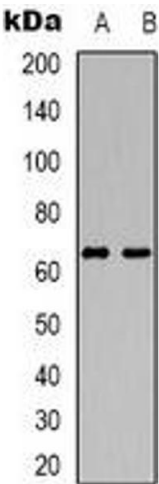
### Immunofluorescence

**Image 1.** Immunofluorescent analysis of DCP1A staining in HepG2 cells. Formalin-fixed cells were permeabilized with 0.1% Triton X-100 in TBS for 5-10 minutes and blocked with 3% BSA-PBS for 30 minutes at room temperature. Cells were probed with the primary antibody



Immunohistochemistry

**Image 2.** Immunohistochemical analysis of DCP1A staining in human kidney formalin fixed paraffin embedded tissue section. The section was pre-treated using heat mediated antigen retrieval with sodium citrate buffer (pH 6.0). The section was then incubated with the



Western Blotting

**Image 3.** Western blot analysis of DCP1A expression in HuvEc (A), Jurkat (B) whole cell lysates.