



[Go to Product page](#)

Datasheet for ABIN7303840  
**anti-PTGER2 antibody (C-Term)**

3 Images

### Overview

Quantity:	100 µL
Target:	PTGER2
Binding Specificity:	C-Term
Reactivity:	Human, Mouse, Rat, Dog
Host:	Rabbit
Clonality:	Polyclonal
Conjugate:	This PTGER2 antibody is un-conjugated
Application:	Western Blotting (WB), Immunohistochemistry (IHC), Immunofluorescence (IF), Immunochromatography (IC)

### Product Details

Immunogen:	KLH-conjugated synthetic peptide encompassing a sequence within the C-term region of human EP2.
Specificity:	Recognizes endogenous levels of EP2 protein.
Characteristics:	Rabbit polyclonal antibody to EP2
Purification:	The antibody was purified by immunogen affinity chromatography.

### Target Details

Target:	PTGER2
Alternative Name:	EP2 ( <a href="#">PTGER2 Products</a> )

## Target Details

Background:	Prostaglandin E2 receptor EP2 subtype, PGE receptor EP2 subtype, PGE2 receptor EP2 subtype, Prostanoid EP2 receptor
Gene ID:	5732, 19217, 81752
UniProt:	<a href="#">P43116</a> , <a href="#">Q62053</a> , <a href="#">Q62928</a>

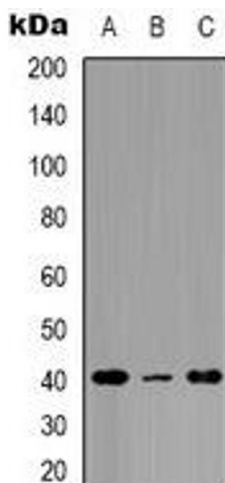
## Application Details

Application Notes:	WB (1:500 - 1:1000), IH (1:100 - 1:200), IF/IC (1:100 - 1:500)
Restrictions:	For Research Use only

## Handling

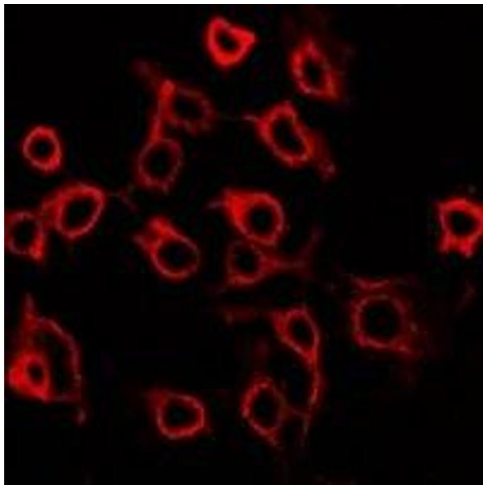
Format:	Liquid
Buffer:	Liquid in 0.42 % Potassium phosphate, 0.87 % Sodium chloride, pH 7.3, 30 % glycerol, and 0.01 % sodium azide.
Preservative:	Sodium azide
Precaution of Use:	This product contains Sodium azide: a POISONOUS AND HAZARDOUS SUBSTANCE which should be handled by trained staff only.
Storage:	-20 °C
Storage Comment:	Shipped at 4°C. Upon delivery aliquot and store at -20°C for one year. Avoid freeze/thaw cycles.
Expiry Date:	12 months

## Images



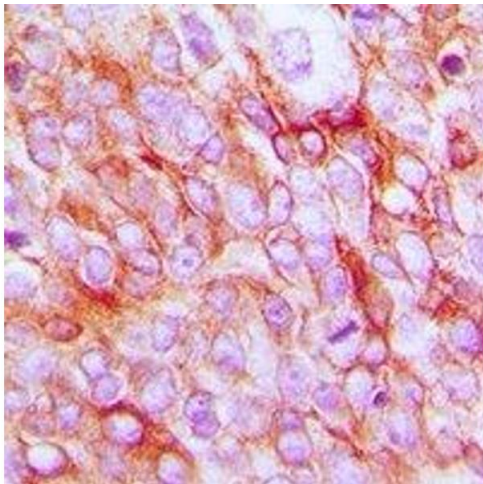
### Western Blotting

**Image 1.** Western blot analysis of EP2 expression in mouse brain (A), mouse heart (B), rat kidney (C) whole cell lysates.



### Immunofluorescence

**Image 2.** Immunofluorescent analysis of EP2 staining in HuvEc cells. Formalin-fixed cells were permeabilized with 0.1% Triton X-100 in TBS for 5-10 minutes and blocked with 3% BSA-PBS for 30 minutes at room temperature. Cells were probed with the primary antibody i



### Immunohistochemistry

**Image 3.** Immunohistochemical analysis of EP2 staining in human prostate cancer formalin fixed paraffin embedded tissue section. The section was pre-treated using heat mediated antigen retrieval with sodium citrate buffer (pH 6.0). The section was then incubated wi