



[Go to Product page](#)

Datasheet for ABIN7303842

## anti-GPR101 antibody (C-Term)

### 3 Images

#### Overview

Quantity:	100 µL
Target:	GPR101
Binding Specificity:	C-Term
Reactivity:	Human, Mouse, Rat, Monkey
Host:	Rabbit
Clonality:	Polyclonal
Conjugate:	This GPR101 antibody is un-conjugated
Application:	Western Blotting (WB), Immunofluorescence (IF), Immunohistochemistry (IHC), Immunochromatography (IC)

#### Product Details

Immunogen:	KLH-conjugated synthetic peptide encompassing a sequence within the C-term region of human GPR101.
Specificity:	Recognizes endogenous levels of GPR101 protein.
Characteristics:	Rabbit polyclonal antibody to GPR101
Purification:	The antibody was purified by immunogen affinity chromatography.

#### Target Details

Target:	GPR101
Alternative Name:	GPR101 ( <a href="#">GPR101 Products</a> )

## Target Details

Background: Probable G-protein coupled receptor 101

Gene ID: 83550, 245424

UniProt: [Q96P66](#), [Q80T62](#)

## Application Details

Application Notes: WB (1:500 - 1:1000), IH (1:100 - 1:200), IF/IC (1:100 - 1:500)

Restrictions: For Research Use only

## Handling

Format: Liquid

Buffer: Liquid in 0.42 % Potassium phosphate, 0.87 % Sodium chloride, pH 7.3, 30 % glycerol, and 0.01 % sodium azide.

Preservative: Sodium azide

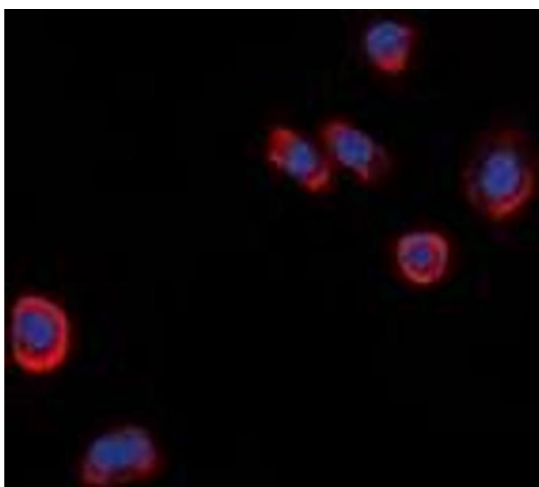
Precaution of Use: This product contains Sodium azide: a POISONOUS AND HAZARDOUS SUBSTANCE which should be handled by trained staff only.

Storage: -20 °C

Storage Comment: Shipped at 4°C. Upon delivery aliquot and store at -20°C for one year. Avoid freeze/thaw cycles.

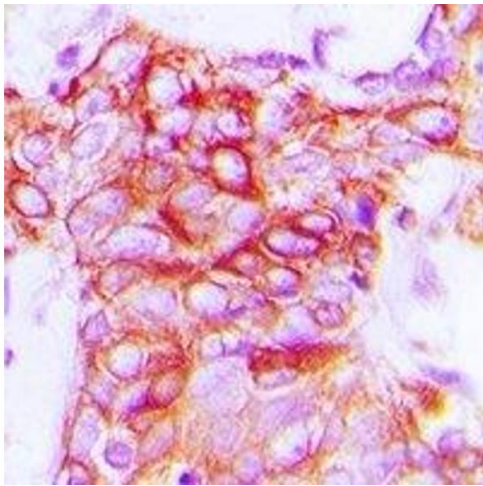
Expiry Date: 12 months

## Images



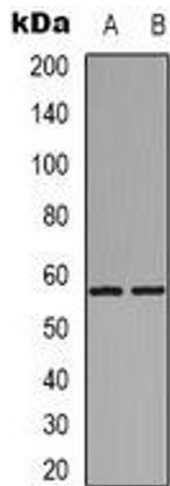
### Immunofluorescence

**Image 1.** Immunofluorescent analysis of GPR101 staining in HeLa cells. Formalin-fixed cells were permeabilized with 0.1% Triton X-100 in TBS for 5-10 minutes and blocked with 3% BSA-PBS for 30 minutes at room temperature. Cells were probed with the primary antibody



### Immunohistochemistry

**Image 2.** Immunohistochemical analysis of GPR101 staining in human breast cancer formalin fixed paraffin embedded tissue section. The section was pre-treated using heat mediated antigen retrieval with sodium citrate buffer (pH 6.0). The section was then incubated w



### Western Blotting

**Image 3.** Western blot analysis of GPR101 expression in HeLa (A), rat muscle (B) whole cell lysates.