

Datasheet for ABIN7303852

anti-CPI-17 antibody (N-Term, pSer38)[Go to Product page](#)**2** Images

Overview

| | |
|----------------------|---|
| Quantity: | 100 µL |
| Target: | CPI-17 (PPP1R14A) |
| Binding Specificity: | N-Term, pSer38 |
| Reactivity: | Human, Mouse, Rat, Pig |
| Host: | Rabbit |
| Clonality: | Polyclonal |
| Conjugate: | This CPI-17 antibody is un-conjugated |
| Application: | Western Blotting (WB), Immunohistochemistry (IHC) |

Product Details

| | |
|------------------|--|
| Immunogen: | KLH-conjugated synthetic peptide encompassing a sequence within the N-term region of human CPI17 (pT38). |
| Specificity: | Recognizes endogenous levels of CPI17 (pT38) protein. |
| Characteristics: | Rabbit polyclonal antibody to CPI17 (pT38) |
| Purification: | The antibody was purified by immunogen affinity chromatography. |

Target Details

| | |
|-------------------|--|
| Target: | CPI-17 (PPP1R14A) |
| Alternative Name: | CPI17 (PPP1R14A Products) |
| Background: | CPI17, PPP1INL, Protein phosphatase 1 regulatory subunit 14A, 17 kDa PKC-potentiated |

Target Details

| | |
|----------|---|
| | inhibitory protein of PP1, Protein kinase C-potentiated inhibitor protein of 17 kDa, CPI-17 |
| Gene ID: | 94274, 68458, 114004 |
| UniProt: | Q96A00 , Q91VC7 , Q99MC0 |

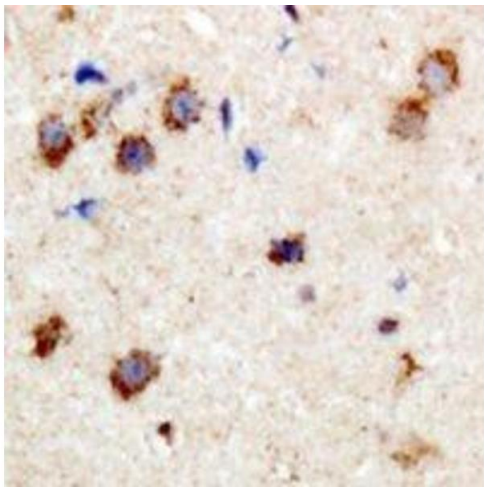
Application Details

| | |
|--------------------|---|
| Application Notes: | WB (1:500 - 1:1000), IH (1:100 - 1:200) |
| Restrictions: | For Research Use only |

Handling

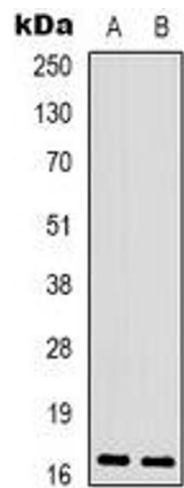
| | |
|--------------------|--|
| Format: | Liquid |
| Buffer: | Liquid in 0.42 % Potassium phosphate, 0.87 % Sodium chloride, pH 7.3, 30 % glycerol, and 0.01 % sodium azide. |
| Preservative: | Sodium azide |
| Precaution of Use: | This product contains Sodium azide: a POISONOUS AND HAZARDOUS SUBSTANCE which should be handled by trained staff only. |
| Storage: | -20 °C |
| Storage Comment: | Shipped at 4°C. Upon delivery aliquot and store at -20°C for one year. Avoid freeze/thaw cycles. |
| Expiry Date: | 12 months |

Images



Immunohistochemistry

Image 1. Immunohistochemical analysis of CPI17 (pT38) staining in human brain formalin fixed paraffin embedded tissue section. The section was pre-treated using heat mediated antigen retrieval with sodium citrate buffer (pH 6.0). The section was then incubated with



Western Blotting

Image 2. Western blot analysis of CPI17 (pT38) expression in SHSY5Y (A), Raw264.7 (B) whole cell lysates.