

Datasheet for ABIN7303854
anti-DOK2 antibody



[Go to Product page](#)

3 Images

Overview

| | |
|--------------|--|
| Quantity: | 100 µL |
| Target: | DOK2 |
| Reactivity: | Human |
| Host: | Rabbit |
| Clonality: | Polyclonal |
| Conjugate: | This DOK2 antibody is un-conjugated |
| Application: | Western Blotting (WB), Immunohistochemistry (IHC), Immunofluorescence (IF), Immunochromatography (IC) |

Product Details

| | |
|------------------|--|
| Immunogen: | KLH-conjugated synthetic peptide encompassing a sequence within the center region of human DOK2. |
| Specificity: | Recognizes endogenous levels of DOK2 protein. |
| Characteristics: | Rabbit polyclonal antibody to DOK2 |
| Purification: | The antibody was purified by immunogen affinity chromatography. |

Target Details

| | |
|-------------------|--|
| Target: | DOK2 |
| Alternative Name: | DOK2 (DOK2 Products) |
| Background: | Docking protein 2, Downstream of tyrosine kinase 2, p56(dok-2) |

Target Details

Gene ID: 9046

UniProt: [O60496](#)

Application Details

Application Notes: WB (1:500 - 1:1000), IH (1:100 - 1:200), IF/IC (1:100 - 1:500)

Restrictions: For Research Use only

Handling

Format: Liquid

Buffer: Liquid in 0.42 % Potassium phosphate, 0.87 % Sodium chloride, pH 7.3, 30 % glycerol, and 0.01 % sodium azide.

Preservative: Sodium azide

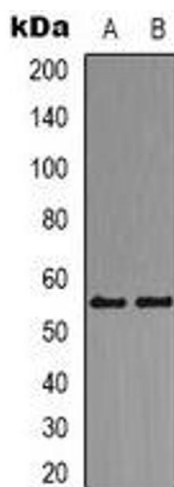
Precaution of Use: This product contains Sodium azide: a POISONOUS AND HAZARDOUS SUBSTANCE which should be handled by trained staff only.

Storage: -20 °C

Storage Comment: Shipped at 4°C. Upon delivery aliquot and store at -20°C for one year. Avoid freeze/thaw cycles.

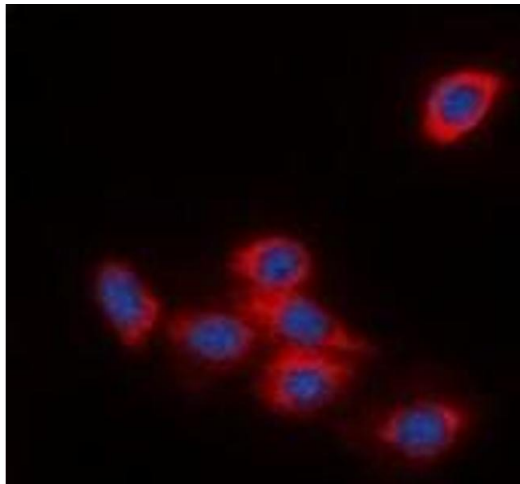
Expiry Date: 12 months

Images



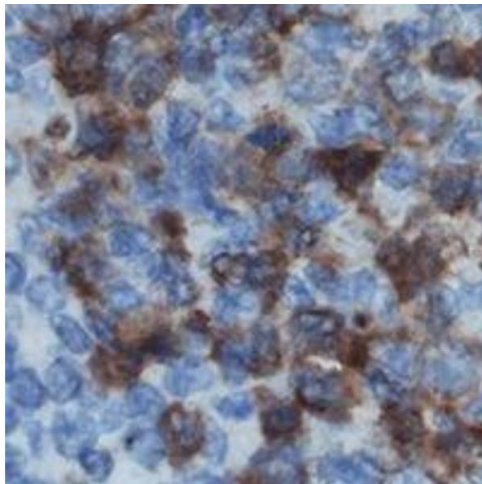
Western Blotting

Image 1. Western blot analysis of DOK2 expression in Jurkat (A), K562 (B) whole cell lysates.



Immunofluorescence

Image 2. Immunofluorescent analysis of DOK2 staining in HeLa cells. Formalin-fixed cells were permeabilized with 0.1% Triton X-100 in TBS for 5-10 minutes and blocked with 3% BSA-PBS for 30 minutes at room temperature. Cells were probed with the primary antibody i



Immunohistochemistry

Image 3. Immunohistochemical analysis of DOK2 staining in human lymph node formalin fixed paraffin embedded tissue section. The section was pre-treated using heat mediated antigen retrieval with sodium citrate buffer (pH 6.0). The section was then incubated with t