

Datasheet for ABIN7303876

anti-Septin 1 antibody**2** Images[Go to Product page](#)

Overview

Quantity:	100 µL
Target:	Septin 1 (SEPT1)
Reactivity:	Human, Mouse, Cow
Host:	Rabbit
Clonality:	Polyclonal
Conjugate:	This Septin 1 antibody is un-conjugated
Application:	Western Blotting (WB), Immunohistochemistry (IHC)

Product Details

Immunogen:	KLH-conjugated synthetic peptide encompassing a sequence within the center region of human Septin 1.
Specificity:	Recognizes endogenous levels of Septin 1 protein.
Characteristics:	Rabbit polyclonal antibody to Septin 1
Purification:	The antibody was purified by immunogen affinity chromatography.

Target Details

Target:	Septin 1 (SEPT1)
Alternative Name:	Septin 1 (SEPT1 Products)
Background:	DIFF6, PNUTL3, Septin-1, LARP, Peanut-like protein 3, Serologically defined breast cancer antigen NY-BR-24

Target Details

Gene ID: 1731, 54204

UniProt: [Q8WYJ6](#), [P42209](#)

Application Details

Application Notes: WB (1:500 - 1:1000), IH (1:100 - 1:200)

Restrictions: For Research Use only

Handling

Format: Liquid

Buffer: Liquid in 0.42 % Potassium phosphate, 0.87 % Sodium chloride, pH 7.3, 30 % glycerol, and 0.01 % sodium azide.

Preservative: Sodium azide

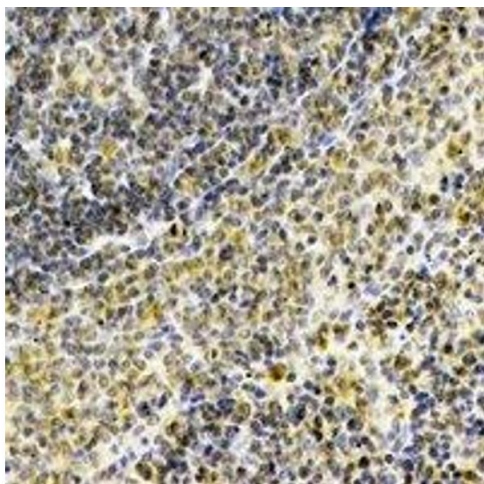
Precaution of Use: This product contains Sodium azide: a POISONOUS AND HAZARDOUS SUBSTANCE which should be handled by trained staff only.

Storage: -20 °C

Storage Comment: Shipped at 4°C. Upon delivery aliquot and store at -20°C for one year. Avoid freeze/thaw cycles.

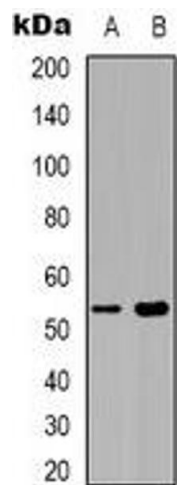
Expiry Date: 12 months

Images



Immunohistochemistry

Image 1. Immunohistochemical analysis of Septin 1 staining in human spleen formalin fixed paraffin embedded tissue section. The section was pre-treated using heat mediated antigen retrieval with sodium citrate buffer (pH 6.0). The section was then incubated with t



Western Blotting

Image 2. Western blot analysis of Septin 1 expression in COLO205 (A), Raw264.7 (B) whole cell lysates.