



[Go to Product page](#)

Datasheet for ABIN7303914  
**anti-EPHB1/2 antibody**

3 Images

### Overview

Quantity:	100 µL
Target:	EPHB1/2
Reactivity:	Human, Mouse, Rat, Chicken
Host:	Rabbit
Clonality:	Polyclonal
Conjugate:	This EPHB1/2 antibody is un-conjugated
Application:	Immunofluorescence (IF), Western Blotting (WB), Immunohistochemistry (IHC), Immunochromatography (IC)

### Product Details

Immunogen:	KLH-conjugated synthetic peptide encompassing a sequence within the center region of human EPHB1/2.
Specificity:	Recognizes endogenous levels of EPHB1/2 protein.
Characteristics:	Rabbit polyclonal antibody to EPHB1/2
Purification:	The antibody was purified by immunogen affinity chromatography.

### Target Details

Target:	EPHB1/2
Alternative Name:	EPHB1/2 ( <a href="#">EPHB1/2 Products</a> )
Background:	EPHB1, ELK, EPHT2, HEK6, NET, Ephrin type-B receptor 1, ELK, EPH tyrosine kinase 2, EPH-like kinase 6, EK6, hEK6, Neuronally-expressed EPH-related tyrosine kinase, NET, Tyrosine-protein

## Target Details

---

kinase receptor EPH-2, EPHB2, DRT, EPHT3, EPTH3, ERK, HEK5, TYRO5, Ephrin type-B receptor 2, Developmentally-regulated Eph-related tyrosine kinase, ELK-related tyrosine kinase, EPH tyrosine kinase 3, EPH-like kinase 5, EK5, hEK5, Renal carcinoma antigen NY-REN-47, Tyrosine-protein kinase TYRO5, Tyrosine-protein kinase receptor EPH-3

Gene ID: 2047, 1969, 270190

UniProt: [P54762](#), [P29323](#), [Q8CBF3](#), [P54763](#), [P09759](#)

## Application Details

---

Application Notes: WB (1:500 - 1:1000), IH (1:100 - 1:200), IF/IC (1:100 - 1:500)

Restrictions: For Research Use only

## Handling

---

Format: Liquid

Buffer: Liquid in 0.42 % Potassium phosphate, 0.87 % Sodium chloride, pH 7.3, 30 % glycerol, and 0.01 % sodium azide.

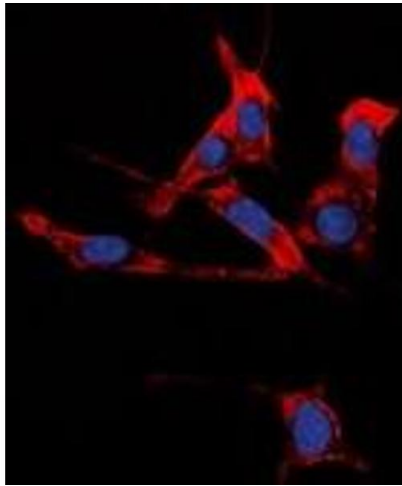
Preservative: Sodium azide

Precaution of Use: This product contains Sodium azide: a POISONOUS AND HAZARDOUS SUBSTANCE which should be handled by trained staff only.

Storage: -20 °C

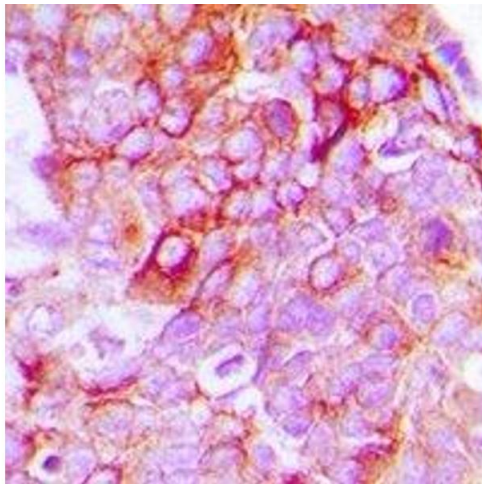
Storage Comment: Shipped at 4°C. Upon delivery aliquot and store at -20°C for one year. Avoid freeze/thaw cycles.

Expiry Date: 12 months



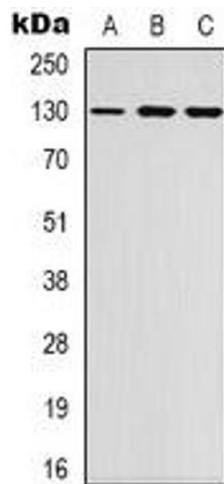
### Immunofluorescence

**Image 1.** Immunofluorescent analysis of EPHB1/2 staining in HuvEc cells. Formalin-fixed cells were permeabilized with 0.1% Triton X-100 in TBS for 5-10 minutes and blocked with 3% BSA-PBS for 30 minutes at room temperature. Cells were probed with the primary antibo



### Immunohistochemistry

**Image 2.** Immunohistochemical analysis of EPHB1/2 staining in human breast cancer formalin fixed paraffin embedded tissue section. The section was pre-treated using heat mediated antigen retrieval with sodium citrate buffer (pH 6.0). The section was then incubated



### Western Blotting

**Image 3.** Western blot analysis of EPHB1/2 expression in K562 (A), NIH3T3 (B), HEK293T (C) whole cell lysates.