

Datasheet for ABIN7303924
anti-ADD2 antibody



[Go to Product page](#)

2 Images

Overview

Quantity:	100 µL
Target:	ADD2
Reactivity:	Human, Mouse, Rat
Host:	Rabbit
Clonality:	Polyclonal
Conjugate:	This ADD2 antibody is un-conjugated
Application:	Western Blotting (WB), Immunofluorescence (IF), Immunochromatography (IC)

Product Details

Immunogen:	KLH-conjugated synthetic peptide encompassing a sequence within the center region of human Beta-adducin.
Specificity:	Recognizes endogenous levels of Beta-adducin protein.
Characteristics:	Rabbit polyclonal antibody to Beta-adducin
Purification:	The antibody was purified by immunogen affinity chromatography.

Target Details

Target:	ADD2
Alternative Name:	beta-Adducin (ADD2 Products)
Background:	ADDB, Beta-adducin, Erythrocyte adducin subunit beta
Gene ID:	119, 11519, 24171

Target Details

UniProt: [P35612, Q9QYB8, Q05764](#)

Pathways: [Regulation of Actin Filament Polymerization](#)

Application Details

Application Notes: WB (1:500 - 1:1000), IF/IC (1:100 - 1:500)

Restrictions: For Research Use only

Handling

Format: Liquid

Buffer: Liquid in 0.42 % Potassium phosphate, 0.87 % Sodium chloride, pH 7.3, 30 % glycerol, and 0.01 % sodium azide.

Preservative: Sodium azide

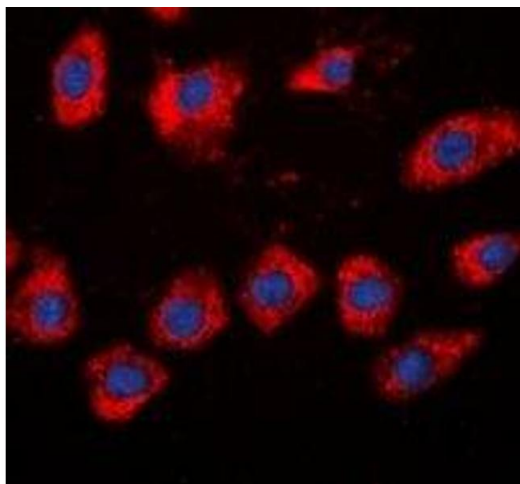
Precaution of Use: This product contains Sodium azide: a POISONOUS AND HAZARDOUS SUBSTANCE which should be handled by trained staff only.

Storage: -20 °C

Storage Comment: Shipped at 4°C. Upon delivery aliquot and store at -20°C for one year. Avoid freeze/thaw cycles.

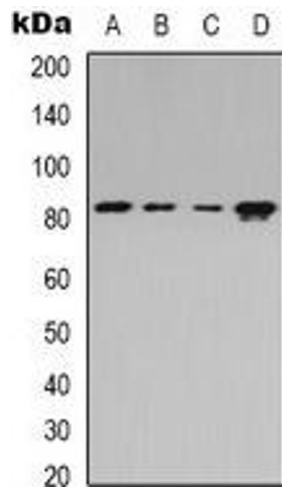
Expiry Date: 12 months

Images



Immunofluorescence

Image 1. Immunofluorescent analysis of Beta-adducin staining in HeLa cells. Formalin-fixed cells were permeabilized with 0.1% Triton X-100 in TBS for 5-10 minutes and blocked with 3% BSA-PBS for 30 minutes at room temperature. Cells were probed with the primary an



Western Blotting

Image 2. Western blot analysis of Beta-adducin expression in Jurkat (A), HEK293T (B), Raw264.7 (C), rat spleen (D) whole cell lysates.