

Datasheet for ABIN7303944
anti-TRAF6 antibody



[Go to Product page](#)

2 Images

Overview

Quantity:	100 µL
Target:	TRAF6
Reactivity:	Human, Mouse, Rat, Cow, Pig
Host:	Rabbit
Clonality:	Polyclonal
Conjugate:	This TRAF6 antibody is un-conjugated
Application:	Western Blotting (WB), Immunohistochemistry (IHC)

Product Details

Immunogen:	KLH-conjugated synthetic peptide encompassing a sequence within the center region of human TRAF6.
Specificity:	Recognizes endogenous levels of TRAF6 protein.
Characteristics:	Rabbit polyclonal antibody to TRAF6
Purification:	The antibody was purified by immunogen affinity chromatography.

Target Details

Target:	TRAF6
Alternative Name:	TRAF6 (TRAF6 Products)
Background:	RNF85, TNF receptor-associated factor 6, E3 ubiquitin-protein ligase TRAF6, Interleukin-1 signal transducer, RING finger protein 85

Target Details

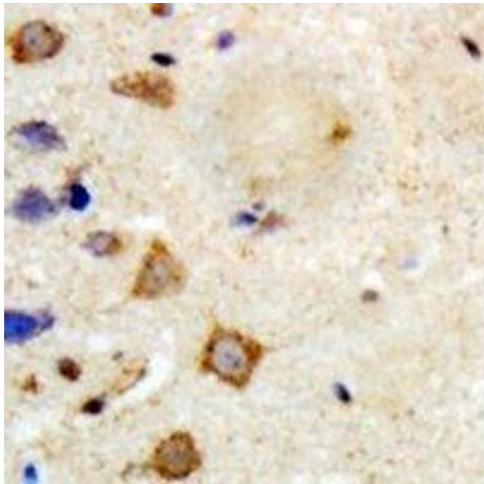
Gene ID:	7189, 22034, 311245
UniProt:	Q9Y4K3 , P70196 , B5DF45
Pathways:	NF-kappaB Signaling , TCR Signaling , TLR Signaling , Fc-epsilon Receptor Signaling Pathway , Neurotrophin Signaling Pathway , Activation of Innate immune Response , Regulation of Leukocyte Mediated Immunity , Positive Regulation of Immune Effector Process , Production of Molecular Mediator of Immune Response , Tube Formation , Hepatitis C , Toll-Like Receptors Cascades , Ubiquitin Proteasome Pathway

Application Details

Application Notes:	WB (1:500 - 1:1000), IH (1:100 - 1:200)
Restrictions:	For Research Use only

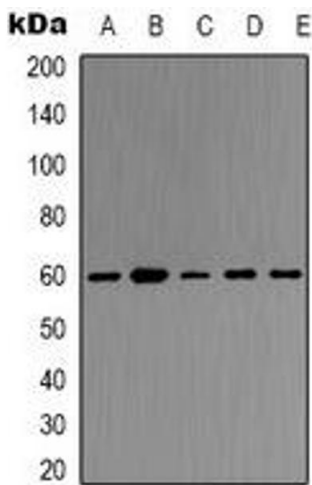
Handling

Format:	Liquid
Buffer:	Liquid in 0.42 % Potassium phosphate, 0.87 % Sodium chloride, pH 7.3, 30 % glycerol, and 0.01 % sodium azide.
Preservative:	Sodium azide
Precaution of Use:	This product contains Sodium azide: a POISONOUS AND HAZARDOUS SUBSTANCE which should be handled by trained staff only.
Storage:	-20 °C
Storage Comment:	Shipped at 4°C. Upon delivery aliquot and store at -20°C for one year. Avoid freeze/thaw cycles.
Expiry Date:	12 months



Immunohistochemistry

Image 1. Immunohistochemical analysis of TRAF6 staining in human brain formalin fixed paraffin embedded tissue section. The section was pre-treated using heat mediated antigen retrieval with sodium citrate buffer (pH 6.0). The section was then incubated with the a



Western Blotting

Image 2. Western blot analysis of TRAF6 expression in Hela (A), K562 (B), Rat kidney (C), Rat heart (D), mouse kidney (E) whole cell lysates.