

Datasheet for ABIN7303960

anti-PEA15 antibody (C-Term, pSer116)



[Go to Product page](#)

2 Images

Overview

| | |
|----------------------|---|
| Quantity: | 100 µL |
| Target: | PEA15 |
| Binding Specificity: | C-Term, pSer116 |
| Reactivity: | Human, Mouse, Rat, Monkey |
| Host: | Rabbit |
| Clonality: | Polyclonal |
| Conjugate: | This PEA15 antibody is un-conjugated |
| Application: | Western Blotting (WB), Immunohistochemistry (IHC) |

Product Details

| | |
|------------------|---|
| Immunogen: | KLH-conjugated synthetic peptide encompassing a sequence within the C-term region of human PEA15 (pS116). |
| Specificity: | Recognizes endogenous levels of PEA15 (pS116) protein. |
| Characteristics: | Rabbit polyclonal antibody to PEA15 (pS116) |
| Purification: | The antibody was purified by immunogen affinity chromatography. |

Target Details

| | |
|-------------------|---|
| Target: | PEA15 |
| Alternative Name: | PEA15 (PEA15 Products) |
| Background: | Astrocytic phosphoprotein PEA-15, 15 kDa phosphoprotein enriched in astrocytes, |

Target Details

Phosphoprotein enriched in diabetes, PED

Gene ID: 8682, 18611, 364052

UniProt: [Q15121](#), [Q62048](#), [Q5U318](#)

Application Details

Application Notes: WB (1:500 - 1:1000), IH (1:100 - 1:200)

Restrictions: For Research Use only

Handling

Format: Liquid

Buffer: Liquid in 0.42 % Potassium phosphate, 0.87 % Sodium chloride, pH 7.3, 30 % glycerol, and 0.01 % sodium azide.

Preservative: Sodium azide

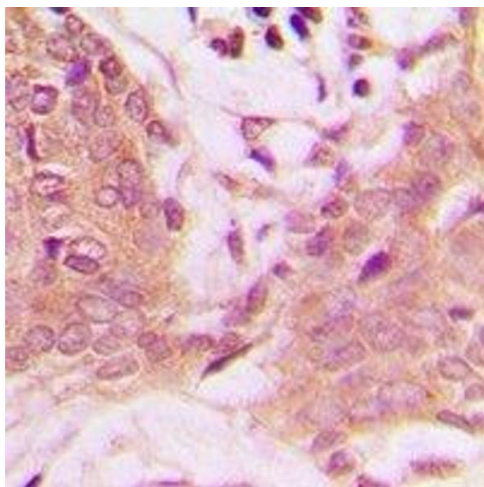
Precaution of Use: This product contains Sodium azide: a POISONOUS AND HAZARDOUS SUBSTANCE which should be handled by trained staff only.

Storage: -20 °C

Storage Comment: Shipped at 4°C. Upon delivery aliquot and store at -20°C for one year. Avoid freeze/thaw cycles.

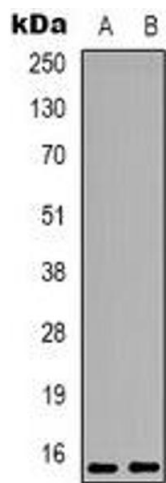
Expiry Date: 12 months

Images



Immunohistochemistry

Image 1. Immunohistochemical analysis of PEA15 (pS116) staining in human breast cancer formalin fixed paraffin embedded tissue section. The section was pre-treated using heat mediated antigen retrieval with sodium citrate buffer (pH 6.0). The section was then incu



Western Blotting

Image 2. Western blot analysis of PEA15 (pS116) expression in COLO205 (A), NIH3T3 (B) whole cell lysates.