

Datasheet for ABIN7303992
anti-PPP2CA antibody (C-Term)

3 Images

[Go to Product page](#)

Overview

Quantity:	100 µL
Target:	PPP2CA
Binding Specificity:	C-Term
Reactivity:	Human, Mouse, Rat, Cow, Rabbit, Pig, Zebrafish (Danio rerio), Chicken
Host:	Rabbit
Clonality:	Polyclonal
Conjugate:	This PPP2CA antibody is un-conjugated
Application:	Western Blotting (WB), Immunohistochemistry (IHC), Immunofluorescence (IF), Immunochromatography (IC)

Product Details

Immunogen:	KLH-conjugated synthetic peptide encompassing a sequence within the C-term region of human PPP2CA.
Specificity:	Recognizes endogenous levels of PPP2CA protein.
Characteristics:	Rabbit polyclonal antibody to PPP2CA
Purification:	The antibody was purified by immunogen affinity chromatography.

Target Details

Target:	PPP2CA
Alternative Name:	PPP2CA (PPP2CA Products)

Target Details

Background:	Serine/threonine-protein phosphatase 2A catalytic subunit alpha isoform, PP2A-alpha, Replication protein C, RP-C
Gene ID:	5515, 19052, 24672
UniProt:	P67775 , P63330 , P63331
Pathways:	PI3K-Akt Signaling , Mitotic G1-G1/S Phases , Hepatitis C , Toll-Like Receptors Cascades

Application Details

Application Notes:	WB (1:500 - 1:1000), IH (1:100 - 1:200), IF/IC (1:100 - 1:500)
Restrictions:	For Research Use only

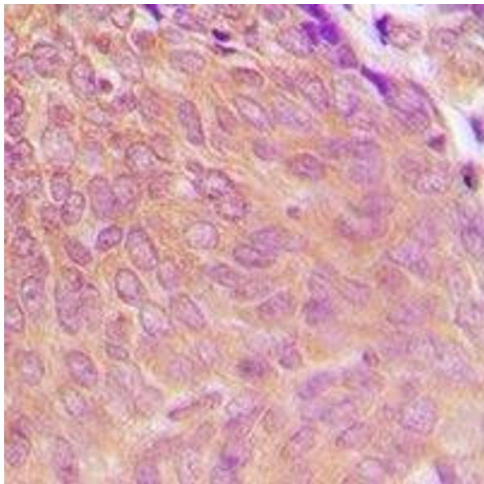
Handling

Format:	Liquid
Buffer:	Liquid in 0.42 % Potassium phosphate, 0.87 % Sodium chloride, pH 7.3, 30 % glycerol, and 0.01 % sodium azide.
Preservative:	Sodium azide
Precaution of Use:	This product contains Sodium azide: a POISONOUS AND HAZARDOUS SUBSTANCE which should be handled by trained staff only.
Storage:	-20 °C
Storage Comment:	Shipped at 4°C. Upon delivery aliquot and store at -20°C for one year. Avoid freeze/thaw cycles.
Expiry Date:	12 months



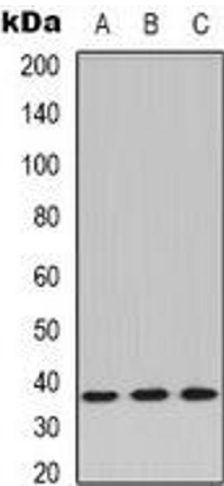
Immunofluorescence

Image 1. Immunofluorescent analysis of PPP2CA staining in HepG2 cells. Formalin-fixed cells were permeabilized with 0.1% Triton X-100 in TBS for 5-10 minutes and blocked with 3% BSA-PBS for 30 minutes at room temperature. Cells were probed with the primary antibody



Immunohistochemistry

Image 2. Immunohistochemical analysis of PPP2CA staining in human breast cancer formalin fixed paraffin embedded tissue section. The section was pre-treated using heat mediated antigen retrieval with sodium citrate buffer (pH 6.0). The section was then incubated w



Western Blotting

Image 3. Western blot analysis of PPP2CA expression in Jurkat (A), L929 (B), A549 (C) whole cell lysates.