

Datasheet for ABIN7304054
anti-Claudin 3 antibody (C-Term)[Go to Product page](#)

2 Images

Overview

Quantity:	100 µL
Target:	Claudin 3 (CLDN3)
Binding Specificity:	C-Term
Reactivity:	Human, Mouse, Rat, Cow, Dog
Host:	Rabbit
Clonality:	Polyclonal
Conjugate:	This Claudin 3 antibody is un-conjugated
Application:	Western Blotting (WB), Immunohistochemistry (IHC)

Product Details

Immunogen:	KLH-conjugated synthetic peptide encompassing a sequence within the C-term region of human Claudin 3.
Specificity:	Recognizes endogenous levels of Claudin 3 protein.
Characteristics:	Rabbit polyclonal antibody to Claudin 3
Purification:	The antibody was purified by immunogen affinity chromatography.

Target Details

Target:	Claudin 3 (CLDN3)
Alternative Name:	Claudin 3 (CLDN3 Products)
Background:	C7orf1, CPETR2, Claudin-3, Clostridium perfringens enterotoxin receptor 2, CPE-R 2, CPE-

Target Details

	receptor 2, Rat ventral prostate.1 protein homolog, hRVP1
Gene ID:	1365, 12739, 65130
UniProt:	O15551 , Q9Z0G9 , Q63400
Pathways:	Hepatitis C

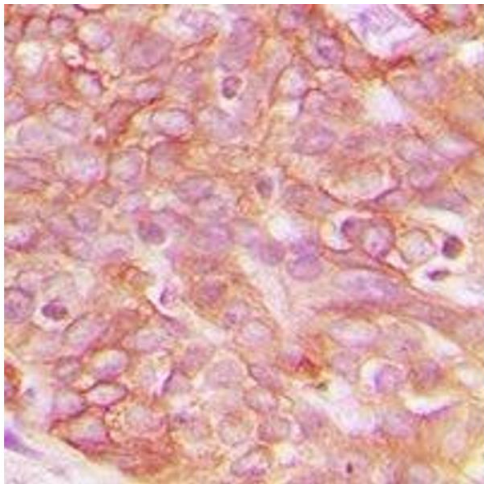
Application Details

Application Notes:	WB (1:500 - 1:1000), IH (1:100 - 1:200)
Restrictions:	For Research Use only

Handling

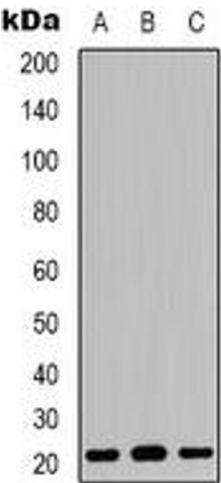
Format:	Liquid
Buffer:	Liquid in 0.42 % Potassium phosphate, 0.87 % Sodium chloride, pH 7.3, 30 % glycerol, and 0.01 % sodium azide.
Preservative:	Sodium azide
Precaution of Use:	This product contains Sodium azide: a POISONOUS AND HAZARDOUS SUBSTANCE which should be handled by trained staff only.
Storage:	-20 °C
Storage Comment:	Shipped at 4°C. Upon delivery aliquot and store at -20°C for one year. Avoid freeze/thaw cycles.
Expiry Date:	12 months

Images



Immunohistochemistry

Image 1. Immunohistochemical analysis of Claudin 3 staining in human breast cancer formalin fixed paraffin embedded tissue section. The section was pre-treated using heat mediated antigen retrieval with sodium citrate buffer (pH 6.0). The section was then incubate



Western Blotting

Image 2. Western blot analysis of Claudin 3 expression in HeLa (A), HEK293T (B), NIH3T3 (C) whole cell lysates.