

Datasheet for ABIN7304060

anti-ITPR3 antibody



[Go to Product page](#)

1 Image

Overview

Quantity:	100 µL
Target:	ITPR3
Reactivity:	Human, Mouse, Rat, Cow
Host:	Rabbit
Clonality:	Polyclonal
Conjugate:	This ITPR3 antibody is un-conjugated
Application:	Western Blotting (WB)

Product Details

Immunogen:	KLH-conjugated synthetic peptide encompassing a sequence within the center region of human IP3R.
Specificity:	Recognizes endogenous levels of IP3R protein.
Characteristics:	Rabbit polyclonal antibody to IP3R
Purification:	The antibody was purified by immunogen affinity chromatography.

Target Details

Target:	ITPR3
Alternative Name:	IP3R (ITPR3 Products)
Background:	INSP3R1, Inositol 1,4,5-trisphosphate receptor type 1, IP3 receptor isoform 1, IP3R 1, InsP3R1, Type 1 inositol 1,4,5-trisphosphate receptor, Type 1 InsP3 receptor

Target Details

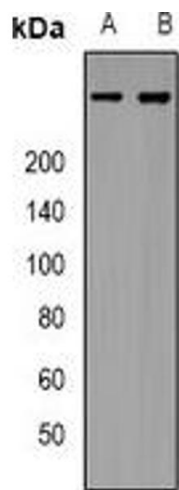
Gene ID:	3708, 16438, 25262
UniProt:	Q14643 , P11881 , P29994
Pathways:	Fc-epsilon Receptor Signaling Pathway , EGFR Signaling Pathway , Neurotrophin Signaling Pathway , Thyroid Hormone Synthesis , Myometrial Relaxation and Contraction , G-protein mediated Events , Interaction of EGFR with phospholipase C-gamma , BCR Signaling

Application Details

Application Notes:	WB (1:500 - 1:1000)
Restrictions:	For Research Use only

Handling

Format:	Liquid
Buffer:	Liquid in 0.42 % Potassium phosphate, 0.87 % Sodium chloride, pH 7.3, 30 % glycerol, and 0.01 % sodium azide.
Preservative:	Sodium azide
Precaution of Use:	This product contains Sodium azide: a POISONOUS AND HAZARDOUS SUBSTANCE which should be handled by trained staff only.
Storage:	-20 °C
Storage Comment:	Shipped at 4°C. Upon delivery aliquot and store at -20°C for one year. Avoid freeze/thaw cycles.
Expiry Date:	12 months



Western Blotting

Image 1. Western blot analysis of IP3R expression in HeLa (A), HEK293T (B) whole cell lysates.