

Datasheet for ABIN7304098

anti-RPS20 antibody

3 Images



[Go to Product page](#)

Overview

Quantity:	100 µL
Target:	RPS20
Reactivity:	Human, Rat, Mouse, Cow, Pig
Host:	Rabbit
Clonality:	Polyclonal
Conjugate:	This RPS20 antibody is un-conjugated
Application:	Western Blotting (WB), Immunofluorescence (IF), Immunohistochemistry (IHC), Immunochromatography (IC)

Product Details

Immunogen:	KLH-conjugated synthetic peptide encompassing a sequence within the center region of human RPS20.
Specificity:	Recognizes endogenous levels of RPS20 protein.
Characteristics:	Rabbit polyclonal antibody to RPS20
Purification:	The antibody was purified by immunogen affinity chromatography.

Target Details

Target:	RPS20
Alternative Name:	RPS20 (RPS20 Products)
Background:	40S ribosomal protein S20

Target Details

Gene ID: 6224, 67427, 100359951

UniProt: [P60866](#), [P60867](#), [P60868](#)

Application Details

Application Notes: WB (1:500 - 1:1000), IH (1:100 - 1:200), IF/IC (1:100 - 1:500)

Restrictions: For Research Use only

Handling

Format: Liquid

Buffer: Liquid in 0.42 % Potassium phosphate, 0.87 % Sodium chloride, pH 7.3, 30 % glycerol, and 0.01 % sodium azide.

Preservative: Sodium azide

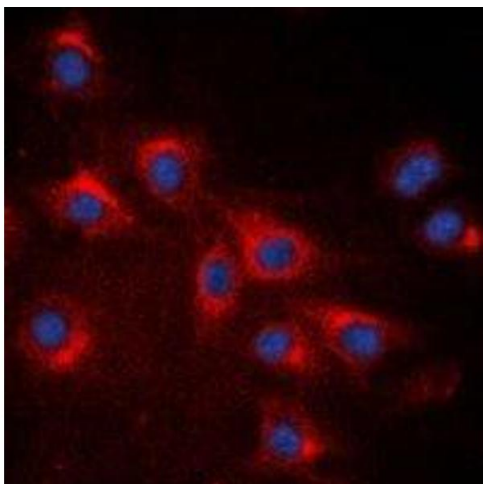
Precaution of Use: This product contains Sodium azide: a POISONOUS AND HAZARDOUS SUBSTANCE which should be handled by trained staff only.

Storage: -20 °C

Storage Comment: Shipped at 4°C. Upon delivery aliquot and store at -20°C for one year. Avoid freeze/thaw cycles.

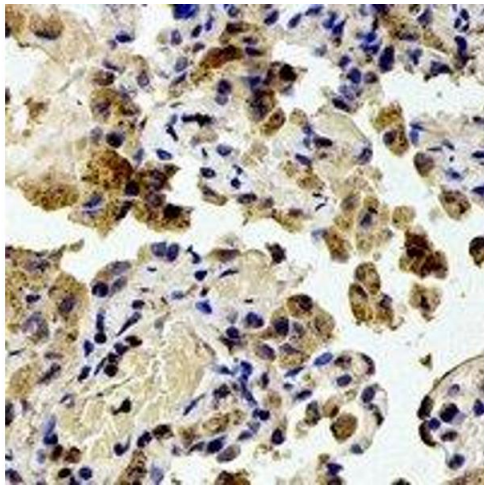
Expiry Date: 12 months

Images



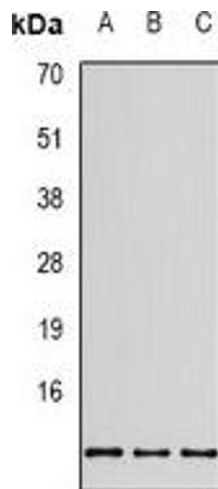
Immunofluorescence

Image 1. Immunofluorescent analysis of RPS20 staining in A549 cells. Formalin-fixed cells were permeabilized with 0.1% Triton X-100 in TBS for 5-10 minutes and blocked with 3% BSA-PBS for 30 minutes at room temperature. Cells were probed with the primary antibody



Immunohistochemistry

Image 2. Immunohistochemical analysis of RPS20 staining in human lung cancer formalin fixed paraffin embedded tissue section. The section was pre-treated using heat mediated antigen retrieval with sodium citrate buffer (pH 6.0). The section was then incubated with



Western Blotting

Image 3. Western blot analysis of RPS20 expression in SHSY5Y (A), MCF7 (B), HEK293T (C) whole cell lysates.