

Datasheet for ABIN7304118

**anti-LRRC41 antibody****2** Images[Go to Product page](#)

## Overview

Quantity:	100 µL
Target:	LRRC41
Reactivity:	Human, Rat, Mouse, Cow
Host:	Rabbit
Clonality:	Polyclonal
Conjugate:	This LRRC41 antibody is un-conjugated
Application:	Western Blotting (WB), Immunohistochemistry (IHC)

## Product Details

Immunogen:	KLH-conjugated synthetic peptide encompassing a sequence within the center region of human LRRC41.
Specificity:	Recognizes endogenous levels of LRRC41 protein.
Characteristics:	Rabbit polyclonal antibody to LRRC41
Purification:	The antibody was purified by immunogen affinity chromatography.

## Target Details

Target:	LRRC41
Alternative Name:	LRRC41 ( <a href="#">LRRC41 Products</a> )
Background:	MUF1, Leucine-rich repeat-containing protein 41, Protein Muf1
Gene ID:	10489, 230654, 362566

## Target Details

UniProt: [Q15345](#), [Q8K1C9](#), [Q5M9H1](#)

## Application Details

Application Notes: WB (1:500 - 1:1000), IH (1:100 - 1:200)

Restrictions: For Research Use only

## Handling

Format: Liquid

Buffer: Liquid in 0.42 % Potassium phosphate, 0.87 % Sodium chloride, pH 7.3, 30 % glycerol, and 0.01 % sodium azide.

Preservative: Sodium azide

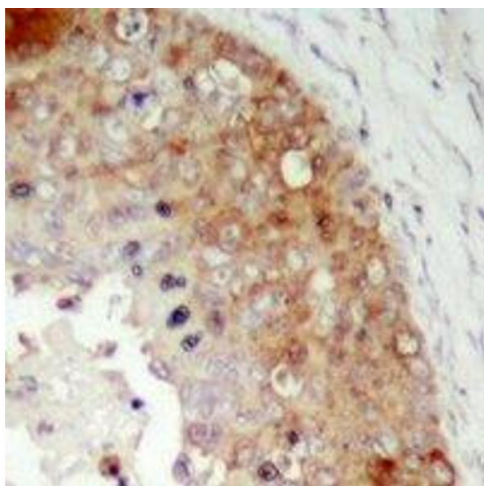
Precaution of Use: This product contains Sodium azide: a POISONOUS AND HAZARDOUS SUBSTANCE which should be handled by trained staff only.

Storage: -20 °C

Storage Comment: Shipped at 4°C. Upon delivery aliquot and store at -20°C for one year. Avoid freeze/thaw cycles.

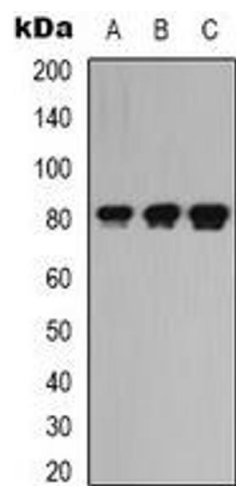
Expiry Date: 12 months

## Images



### Immunohistochemistry

**Image 1.** Immunohistochemical analysis of LRRC41 staining in human prostate cancer formalin fixed paraffin embedded tissue section. The section was pre-treated using heat mediated antigen retrieval with sodium citrate buffer (pH 6.0). The section was then incubated



Western Blotting

**Image 2.** Western blot analysis of LRRC41 expression in K562 (A), rat kidney (B), rat heart (C) whole cell lysates.