

Datasheet for ABIN7304142
anti-TECR antibody (C-Term)[Go to Product page](#)

2 Images

Overview

Quantity:	100 µL
Target:	TECR
Binding Specificity:	C-Term
Reactivity:	Human, Mouse, Rat, Cow
Host:	Rabbit
Clonality:	Polyclonal
Conjugate:	This TECR antibody is un-conjugated
Application:	Western Blotting (WB), Immunohistochemistry (IHC)

Product Details

Immunogen:	KLH-conjugated synthetic peptide encompassing a sequence within the C-term region of human TECR.
Specificity:	Recognizes endogenous levels of TECR protein.
Characteristics:	Rabbit polyclonal antibody to TECR
Purification:	The antibody was purified by immunogen affinity chromatography.

Target Details

Target:	TECR
Alternative Name:	TECR (TECR Products)
Background:	GPSN2, SC2, Very-long-chain enoyl-CoA reductase, Synaptic glycoprotein SC2, Trans-2,3-enoyl-

Target Details

	CoA reductase, TER
Gene ID:	9524, 106529, 191576
UniProt:	Q9NZ01 , Q9CY27 , Q64232

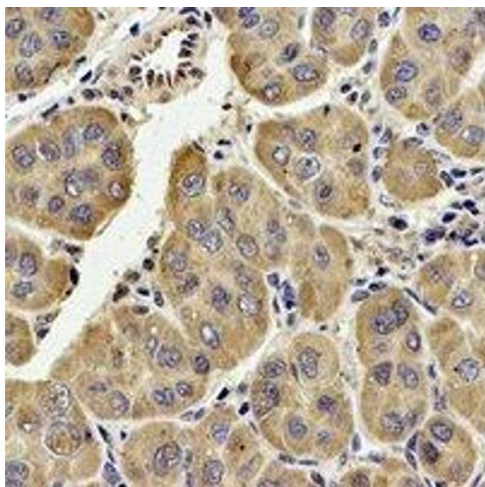
Application Details

Application Notes:	WB (1:500 - 1:1000), IH (1:100 - 1:200)
Restrictions:	For Research Use only

Handling

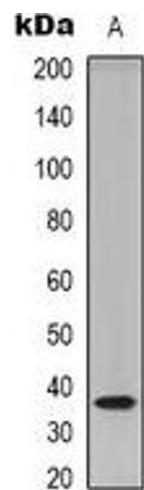
Format:	Liquid
Buffer:	Liquid in 0.42 % Potassium phosphate, 0.87 % Sodium chloride, pH 7.3, 30 % glycerol, and 0.01 % sodium azide.
Preservative:	Sodium azide
Precaution of Use:	This product contains Sodium azide: a POISONOUS AND HAZARDOUS SUBSTANCE which should be handled by trained staff only.
Storage:	-20 °C
Storage Comment:	Shipped at 4°C. Upon delivery aliquot and store at -20°C for one year. Avoid freeze/thaw cycles.
Expiry Date:	12 months

Images



Immunohistochemistry

Image 1. Immunohistochemical analysis of TECR staining in human liver formalin fixed paraffin embedded tissue section. The section was pre-treated using heat mediated antigen retrieval with sodium citrate buffer (pH 6.0). The section was then incubated with the an



Western Blotting

Image 2. Western blot analysis of TECR expression in HEK293T (A) whole cell lysates.