



[Go to Product page](#)

Datasheet for ABIN7304338

anti-CCL27 antibody

2 Images

Overview

Quantity:	100 µL
Target:	CCL27
Reactivity:	Human, Mouse
Host:	Rabbit
Clonality:	Polyclonal
Conjugate:	This CCL27 antibody is un-conjugated
Application:	Western Blotting (WB), Immunohistochemistry (IHC)

Product Details

Immunogen:	KLH-conjugated synthetic peptide encompassing a sequence within the center region of human CCL27.
Specificity:	Recognizes endogenous levels of CCL27 protein.
Characteristics:	Rabbit polyclonal antibody to CCL27
Purification:	The antibody was purified by immunogen affinity chromatography.

Target Details

Target:	CCL27
Alternative Name:	CCL27 (CCL27 Products)
Background:	ILC, SCYA27, C-C motif chemokine 27, CC chemokine ILC, Cutaneous T-cell-attracting chemokine, CTACK, ESKine, IL-11 R-alpha-locus chemokine, Skinkine, Small-inducible cytokine A27

Target Details

Gene ID: 10850, 100039863, 100039939

UniProt: [Q9Y4X3](#), [Q9Z1X0](#)

Application Details

Application Notes: WB (1:500 - 1:1000), IH (1:100 - 1:200)

Restrictions: For Research Use only

Handling

Format: Liquid

Buffer: Liquid in 0.42 % Potassium phosphate, 0.87 % Sodium chloride, pH 7.3, 30 % glycerol, and 0.01 % sodium azide.

Preservative: Sodium azide

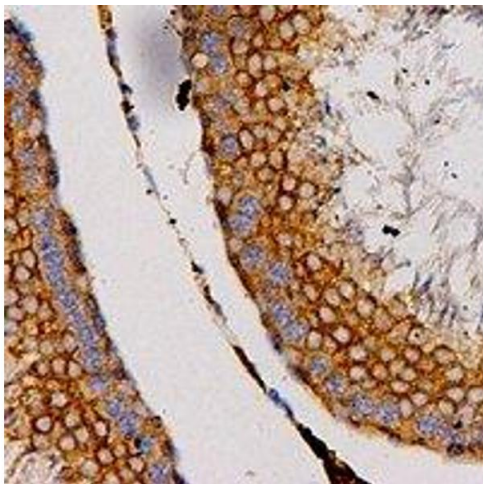
Precaution of Use: This product contains Sodium azide: a POISONOUS AND HAZARDOUS SUBSTANCE which should be handled by trained staff only.

Storage: -20 °C

Storage Comment: Shipped at 4°C. Upon delivery aliquot and store at -20°C for one year. Avoid freeze/thaw cycles.

Expiry Date: 12 months

Images



Immunohistochemistry

Image 1. Immunohistochemical analysis of CCL27 staining in human testis formalin fixed paraffin embedded tissue section. The section was pre-treated using heat mediated antigen retrieval with sodium citrate buffer (pH 6.0). The section was then incubated with the



Western Blotting

Image 2. Western blot analysis of CCL27 expression in mouse kidney (A) whole cell lysates.