

Datasheet for ABIN7304340  
**anti-IL1F10 antibody (C-Term)**

## 2 Images

[Go to Product page](#)

## Overview

Quantity:	100 µL
Target:	IL1F10
Binding Specificity:	C-Term
Reactivity:	Human, Mouse, Rat
Host:	Rabbit
Clonality:	Polyclonal
Conjugate:	This IL1F10 antibody is un-conjugated
Application:	Western Blotting (WB), Immunohistochemistry (IHC)

## Product Details

Immunogen:	KLH-conjugated synthetic peptide encompassing a sequence within the C-term region of human IL-1F10.
Specificity:	Recognizes endogenous levels of IL-1F10 protein.
Characteristics:	Rabbit polyclonal antibody to IL-1F10
Purification:	The antibody was purified by immunogen affinity chromatography.

## Target Details

Target:	IL1F10
Alternative Name:	IL-1F10 ( <a href="#">IL1F10 Products</a> )
Background:	FIL1T, IL1HY2, IL38, Interleukin-1 family member 10, IL-1F10, Family of interleukin 1-theta, FIL1

## Target Details

	theta, Interleukin-1 HY2, IL-1HY2, Interleukin-1 theta, IL-1 theta, Interleukin-38, IL-38
Gene ID:	84639, 215274
UniProt:	<a href="#">Q8WWZ1</a> , <a href="#">Q8R459</a>

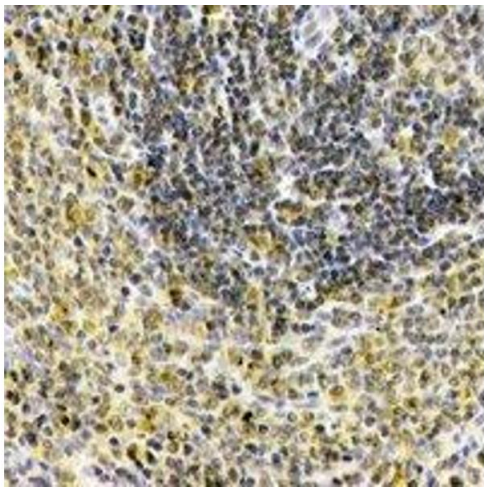
## Application Details

Application Notes:	WB (1:500 - 1:1000), IH (1:100 - 1:200)
Restrictions:	For Research Use only

## Handling

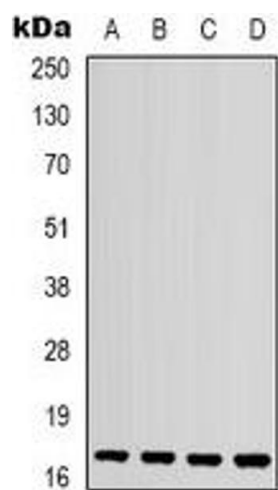
Format:	Liquid
Buffer:	Liquid in 0.42 % Potassium phosphate, 0.87 % Sodium chloride, pH 7.3, 30 % glycerol, and 0.01 % sodium azide.
Preservative:	Sodium azide
Precaution of Use:	This product contains Sodium azide: a POISONOUS AND HAZARDOUS SUBSTANCE which should be handled by trained staff only.
Storage:	-20 °C
Storage Comment:	Shipped at 4°C. Upon delivery aliquot and store at -20°C for one year. Avoid freeze/thaw cycles.
Expiry Date:	12 months

## Images



### Immunohistochemistry

**Image 1.** Immunohistochemical analysis of IL-1F10 staining in human spleen formalin fixed paraffin embedded tissue section. The section was pre-treated using heat mediated antigen retrieval with sodium citrate buffer (pH 6.0). The section was then incubated with th



Western Blotting

**Image 2.** Western blot analysis of IL-1F10 expression in mouse kidney (A), mouse heart (B), mouse brain (C), rat spleen (D) whole cell lysates.