

Datasheet for ABIN7304352

anti-CMTM8 antibody**2** Images[Go to Product page](#)

Overview

Quantity:	100 µL
Target:	CMTM8
Reactivity:	Human, Cow
Host:	Rabbit
Clonality:	Polyclonal
Conjugate:	This CMTM8 antibody is un-conjugated
Application:	Immunohistochemistry (IHC), Western Blotting (WB)

Product Details

Immunogen:	KLH-conjugated synthetic peptide encompassing a sequence within the center region of human CMTM8.
Specificity:	Recognizes endogenous levels of CMTM8 protein.
Characteristics:	Rabbit polyclonal antibody to CMTM8
Purification:	The antibody was purified by immunogen affinity chromatography.

Target Details

Target:	CMTM8
Alternative Name:	CMTM8 (CMTM8 Products)
Background:	CKLFSF8, CKLF-like MARVEL transmembrane domain-containing protein 8, Chemokine-like factor superfamily member 8

Target Details

Gene ID:	152189
UniProt:	Q8IZV2

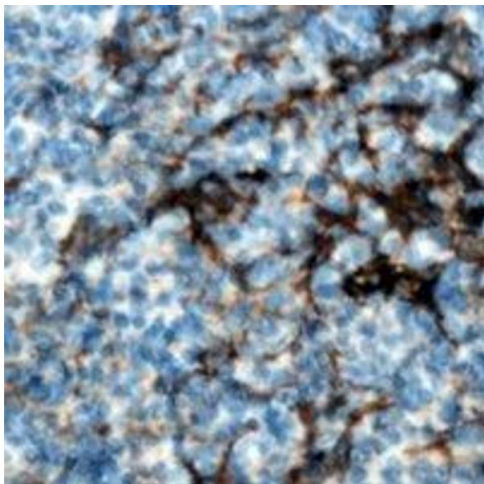
Application Details

Application Notes:	WB (1:500 - 1:1000), IH (1:100 - 1:200)
Restrictions:	For Research Use only

Handling

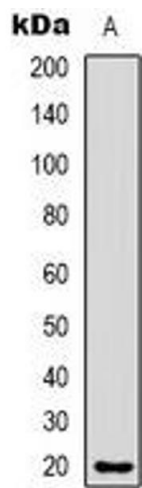
Format:	Liquid
Buffer:	Liquid in 0.42 % Potassium phosphate, 0.87 % Sodium chloride, pH 7.3, 30 % glycerol, and 0.01 % sodium azide.
Preservative:	Sodium azide
Precaution of Use:	This product contains Sodium azide: a POISONOUS AND HAZARDOUS SUBSTANCE which should be handled by trained staff only.
Storage:	-20 °C
Storage Comment:	Shipped at 4°C. Upon delivery aliquot and store at -20°C for one year. Avoid freeze/thaw cycles.
Expiry Date:	12 months

Images



Immunohistochemistry

Image 1. Immunohistochemical analysis of CMTM8 staining in human tonsil formalin fixed paraffin embedded tissue section. The section was pre-treated using heat mediated antigen retrieval with sodium citrate buffer (pH 6.0). The section was then incubated with the



Western Blotting

Image 2. Western blot analysis of CMTM8 expression in HeLa (A) whole cell lysates.