



Datasheet for ABIN7304378

## anti-HRH1 antibody



[Go to Product page](#)

### 2 Images

#### Overview

Quantity:	100 µL
Target:	HRH1
Reactivity:	Human
Host:	Rabbit
Clonality:	Polyclonal
Conjugate:	This HRH1 antibody is un-conjugated
Application:	Western Blotting (WB), Immunofluorescence (IF), Immunochromatography (IC)

#### Product Details

Immunogen:	KLH-conjugated synthetic peptide encompassing a sequence within the center region of human Histamine H1 Receptor.
Specificity:	Recognizes endogenous levels of Histamine H1 Receptor protein.
Characteristics:	Rabbit polyclonal antibody to Histamine H1 Receptor
Purification:	The antibody was purified by immunogen affinity chromatography.

#### Target Details

Target:	HRH1
Alternative Name:	Histamine H1 Receptor ( <a href="#">HRH1 Products</a> )
Background:	Histamine H1 receptor, H1R, HH1R
Gene ID:	3269

## Target Details

UniProt: [P35367](#)

Pathways: [Regulation of Carbohydrate Metabolic Process](#)

## Application Details

Application Notes: WB (1:500 - 1:1000), IF/IC (1:100 - 1:500)

Restrictions: For Research Use only

## Handling

Format: Liquid

Buffer: Liquid in 0.42 % Potassium phosphate, 0.87 % Sodium chloride, pH 7.3, 30 % glycerol, and 0.01 % sodium azide.

Preservative: Sodium azide

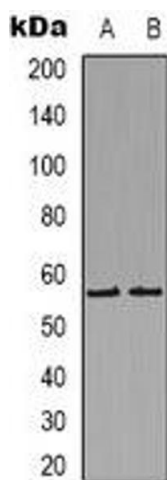
Precaution of Use: This product contains Sodium azide: a POISONOUS AND HAZARDOUS SUBSTANCE which should be handled by trained staff only.

Storage: -20 °C

Storage Comment: Shipped at 4°C. Upon delivery aliquot and store at -20°C for one year. Avoid freeze/thaw cycles.

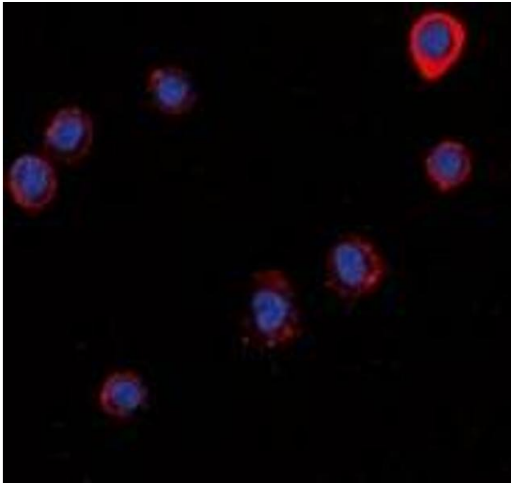
Expiry Date: 12 months

## Images



### Western Blotting

**Image 1.** Western blot analysis of Histamine H1 Receptor expression in Hela (A), COLO205 (B) whole cell lysates.



### Immunofluorescence

**Image 2.** Immunofluorescent analysis of Histamine H1 Receptor staining in LOVO cells. Formalin-fixed cells were permeabilized with 0.1% Triton X-100 in TBS for 5-10 minutes and blocked with 3% BSA-PBS for 30 minutes at room temperature. Cells were probed with the p